

Social Contribution Activities



FY2019 Materiality Targets and Results

○: As planned △: Delayed

Details of Main Initiatives	FY2019 Target	Indicator	FY2019 Results	Self-Evaluation
Undertake activities in cooperation with local communities, NGOs, and other organizations	Social contribution expenditure: 1.0% of ordinary income*1 *1 Ordinary income for MMC on a non-consolidated basis	Social contribution expenditure as a percentage of ordinary income	3.28%	○

Social Contribution Activities Policy

In April 2020, we formulated a wider-ranging social contribution activities policy to help address increasingly diverse global social issues. In addition to continuing with ongoing efforts, the policy calls for us to step up activities through alliances in key markets.

To make more people aware of these activities, we have coined a new phrase for communications, "STEP to the future," and established a logo mark.

Logo Mark for Social Contribution Activities

The figure shows how our circle of activity in STEP areas expands outward from the center.



Social Contribution Activities Policy

To address diversifying social issues, MITSUBISHI MOTORS carries out its STEP social contribution activities, focused on four main themes, standing for the first letters of Society, Traffic safety, Environment and People. Based on this policy, we will continue to contribute to society by utilizing each and every employee's skills and know-how as well as our technologies and products, aiming to create a better society where people can hope for a better future.



Breakdown of Social Contribution Expenditures*2

(¥ million)

	FY2017	FY2018	FY2019
Society	132	116	118
Traffic safety	10	8	21
Environment	135	37	32
People	206	225	169
Support for disaster-stricken areas	25	62	60
Other*3	33	33	43
Total expenditure	540	480	442

*2 Social contribution expenditures including donations as well as in-kind benefits, employee activities, and free use of company facilities converted into monetary equivalents. However, it does not include fund-raising and volunteer activities individually conducted by employees.

Figures for FY2017 and FY2018 are for MMC on a non-consolidated basis.

Payments in FY2019 are on a consolidated basis.

*3 Including support for sporting activities, donations to the Mitsubishi Foundation, etc.



Supporting Measures to Address COVID-19

To help prevent the spread of COVID-19, at overseas subsidiaries we provided vehicles so healthcare workers to travel to medical institutions. We also contributed protective clothing and masks.

In Japan, MITSUBISHI MOTORS plants produced face shields, which we donated to local governments and medical institutions.

By taking advantage of the expertise we have cultivated in the development and production of automobiles, as well as by making use of factory facilities, we are working with national and local governments as well as related organizations around the world on ongoing measures to help prevent the spread of COVID-19.



Providing vehicles to the Department of Transportation in the Philippines



Donated face shields

◆ Measures to help prevent the spread of COVID-19
<https://www.mitsubishi-motors.com/en/sustainability/contribution/society/relief/covid-19/>

MITSUBISHI MOTORS STEP Funds and Matching Gift Program

The MITSUBISHI MOTORS STEP Funds, introduced in April 2009, is a structure through which employees can continuously participate in social contribution activities by voluntarily donating fixed sums to the funds. These funds are then used for to support activities in developing countries and areas struck by the Great East Japan Earthquake, in line with the purposes of MITSUBISHI MOTORS' social contribution activities. The company also matches donations made by the MITSUBISHI MOTORS STEP Funds.



Support Recipient

- World Vision Japan
- OISCA International (The Organization for Industrial, Spiritual and Cultural Advancement-International)
- The MICHINOKU Future Fund
- Kindergartens, Nursery schools, elementary schools, etc., near MITSUBISHI MOTORS workplaces

Support for Construction of a Children's Forum* Library and Assembly Hall

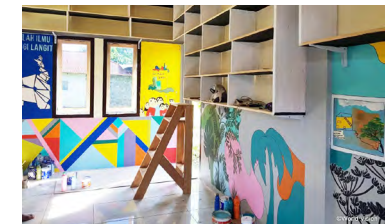
With cooperation from World Vision Japan, an international NGO, we have supported the construction of a library and assembly hall for the Children's Forum in the city of Ternate, North Maluku, Indonesia.

An increasing number of people are participating in Children's Forum activities, which are recognized as positive examples of leading regional change, and

these efforts are gaining traction. By building a library and assembly hall, we have provided a place for regular gatherings.

Through this support, we aim to provide a place for diverse activities that will help children enjoy prosperous growth.

*A community group for children that is promoted and supported by World Vision. In addition to such life skills as reading and writing, the forum provides an opportunity to discuss school and regional issues and a venue for social participation activities leveraging regional management.



Decorations that incorporate children's ideas

"Forest Wooden Building Block Project" for children

The concept of this project is to present nurseries and kindergartens with cozy wooden building blocks for enhancing the children's creativity through block play, which are made of Japanese cypress comes from forestry thinning operations mainly in Hayakawa-cho, located in the prefecture of Yamanashi, where we carry out our forest conservation activities.

In addition, we have newly started "Employee Presenting Project" through which our employees hand out the set of forest wooden building blocks through our internal donation funds to a nursery or kindergarten of their choice.

In fiscal 2019, we presented blocks to 70 kindergartens and nursery schools. The blocks have been donated to 325 kindergartens since 2010.



Building blocks made from thinned cypress



Society

Donating an EV as a Regional Patrol Vehicle

We donated a MINICAB-MiEV electric vehicle to the Kitano School District in the city of Okazaki, Aichi Prefecture, located near our Okazaki Plant. The vehicle is being used as a "blue-light safety patrol" car.

This car patrols the neighborhood to help prevent crime and play a role in safety activities. Its battery can also be used as an external power source at events or to supply electricity in emergencies.



Ceremony for the donation of uniquely wrapped vehicle

Traffic safety

Traffic safety around business sites

Employees regularly serve as traffic safety sentries on the roads around our business sites, helping to ensure safe commutes to school and work.

In fiscal 2019, employees in our business sites participated in such activities 39 times in total.

In April 2019, a team of Mitsubishi safety sentries took part in the Ieyasu Procession in the city of Okazaki, Aichi Prefecture, helping to secure the safety of the many people gathering along the streets.



Calling out for traffic safety at intersections

Helping to Build a Bridge along a School Commuting Route in Vietnam

Mitsubishi Motors Vietnam Co., Ltd. (MMV), in cooperation with the Vietnam Red Cross Society, participated in a project to build a bridge for children on a school commuting route in Thới Lai District, contributing 926 million Vietnamese dong (around ¥4.2 million) toward construction costs. In the past, elementary school children crossed the river in small boats. The new bridge, built by the Vietnam Red Cross Society to help reduce the number of accidents and make travel to and from school safer, was completed in March 2020.



A bridge on the school commuting route

Dissemination of Traffic Safety Information for Children Website for Children "Do You Know the Answer? Traffic Safety Quiz"

On the "Why? Why? Car Development Research Group" website that was designed to provide information on the automobile industry to elementary school age children, there is a webpage about traffic safety using a quiz format to introduce traffic rules and manners they should follow when walking or riding a bicycle in their day-to-day activities.

In 2019, we augmented the daytime schemes with evening scenarios, which present new sources of danger.



"Do You Know the Answer? Traffic Safety Quiz"
 (WEB) <https://www.mitsubishi-motors.com/jp/csr/contribution/next/kids/anzen/>
 (This site is only available in Japanese.)

Environment

Forest Preservation Activities

MITSUBISHI MOTORS is collaborating with OISCA to preserve forests in Hayakawa-cho, Yamanashi Prefecture, while interacting with the local community through volunteer activities. These activities aim to protect metropolitan water sources and spread awareness of the environment among our employees.

In fiscal 2019, under the direction of the Hayakawa-cho forest union, 97 volunteer employees and their family members trimmed undergrowth, while 80 new employees worked on thinning and maintaining sidewalks within the forest.



Trimming undergrowth in planted areas

Joint study in Indonesia Using EVs

In August 2019, MITSUBISHI MOTORS participated in a joint study on renewable energy management being carried out by Indonesia's Agency for the Assessment and Application of Technology and Kyudenko Corporation on the Indonesian island of Sumba. We participated in the study with an i-MiEV electric vehicle and a quick charger. On remote islands, where sourcing gasoline can be difficult, we are contributing to efforts to help Indonesian people use EVs by charging the energy generated photo-voltaic power and accumulating data on EV travel.



The i-MiEV used in the test



People

Hands-on Lessons Program

Based on the idea of helping children to enjoy learning by experiencing the “real thing,” every year since 2005, MITSUBISHI MOTORS has dispatched employees to elementary schools. At the schools, employees conduct classes about the environment to teach students about the relationship between cars and environmental problems. They also offer design classes where students learn about the fun that comes from making things and about working with cars. We also hold a manufacturing class, where students learn about the people who make cars in our factories.

In fiscal 2019, 6,872 students attended these classes at 119 schools. Approximately 42,000 children have participated in these classes since 2005.



Children learning about the structure of electric vehicles

“One-Day Parents” Activities in Indonesia

Mitsubishi Motors Krama Yudha Sales Indonesia (MMKSI) contributes to orphans and runs the Mitsubishi Children Program (MCP). In this program, employees act as foster parents for a day, taking part in activities that put them in touch with children.

In June 2019, we participated in the MCP in the province of West Java, inviting around 100 children aged 5–10 from three orphanages near MMKSI’s office to take part. Employees and members of management took part as volunteer staff, serving as foster parents.



Interaction between employees and the children

Support for Disaster-Stricken Areas

Support in Asia

In September 2019, Mitsubishi Motors Thailand (MMTh) and dealers from the area affected by the tropical storm Podul, which devastated parts of northeastern Thailand, donated 700,000 Thai baht (approximately ¥2.5 million) to five provincial and regional government bodies in the affected region. Employees at the dealers and MMTh, along with their family members, participated in disaster support activities, supplying drinking water, dried food and medical first aid kits.



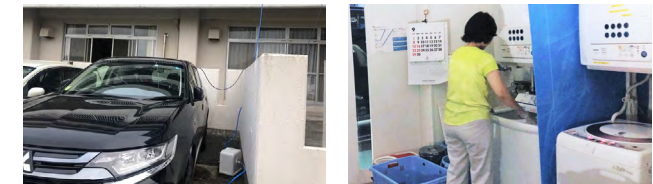
Support for people affected by disaster

Support in Japan

Immediately after the Great East Japan Earthquake, we carefully listened to the needs of the disas-

ter-stricken areas, created a mechanism to support them through our business and in our employees’ daily lives, and have been continuously providing support under the theme of “Don’t Forget/Stay Connected.” Every effort is made to provide a wide range of support in response to emergency situations such as natural disasters. This includes contributions through donations, free loan of vehicles, and volunteer work by employees.

In fiscal 2019, we donated 12 OUTLANDER PHEVs to welfare facilities in Chiba Prefecture, which was hit by large-scale power outages due to Typhoon Faxai. The vehicles helped power home appliances. Going forward, we will continue to offer swift support in times of disaster.



Washing machine powered by OUTLANDER PHEV

Main Support in Fiscal 2019

		Support	Support Recipient
March 2020	COVID-19	• Donated three ASX and three ECLIPSE CROSS vehicles	Medical institutions in China’s Hunan Province
		• Donated hand cream and protective kit	Red Cross Society of China
		• Donated output from two mask production lines	World Vision Japan, an international NGO
		• Support money of ¥4 million*	Medical institutions in the city of Okazaki, Aichi Prefecture
October 2019	Typhoon Hagibis	• Donation of ¥10 million	Japanese Red Cross Society
September 2019	Typhoon Faxai Disaster due to Podul, a tropical storm, in Thailand	• Loan of 12 OUTLANDER PHEVs	Welfare institutions in Chiba Prefecture
		• Donation of 700,000 Thai baht • Relief supplies	Thai provinces of Ubon Ratchathani, Yasothon, Roi Et, Amnat Charoen and Si Sa Ket

*Totals for MITSUBISHI MOTORS STEP Funds and the Matching Gift Program



DENDO Community Support Program (Disaster cooperation agreements with local governments)

MITSUBISHI MOTORS is promoting the DENDO Community Support Program. Under this program, we work with affiliated dealers, entering into disaster cooperation agreements with municipalities around Japan. Our aim is to build a nationwide network for providing the OUTLANDER PHEV, our plug-in electric vehicle, to ensure that power can be provided quickly and without a loss of time to disaster-affected areas and evacuation shelters in times of disaster.

As of June 2020, we had agreements in place with 54*1 municipalities. By fiscal 2022, we aim to have agreements in place with municipalizes across Japan.

*1 Excluding two-party agreements between affiliated dealers and municipalities



Okayama Prefecture

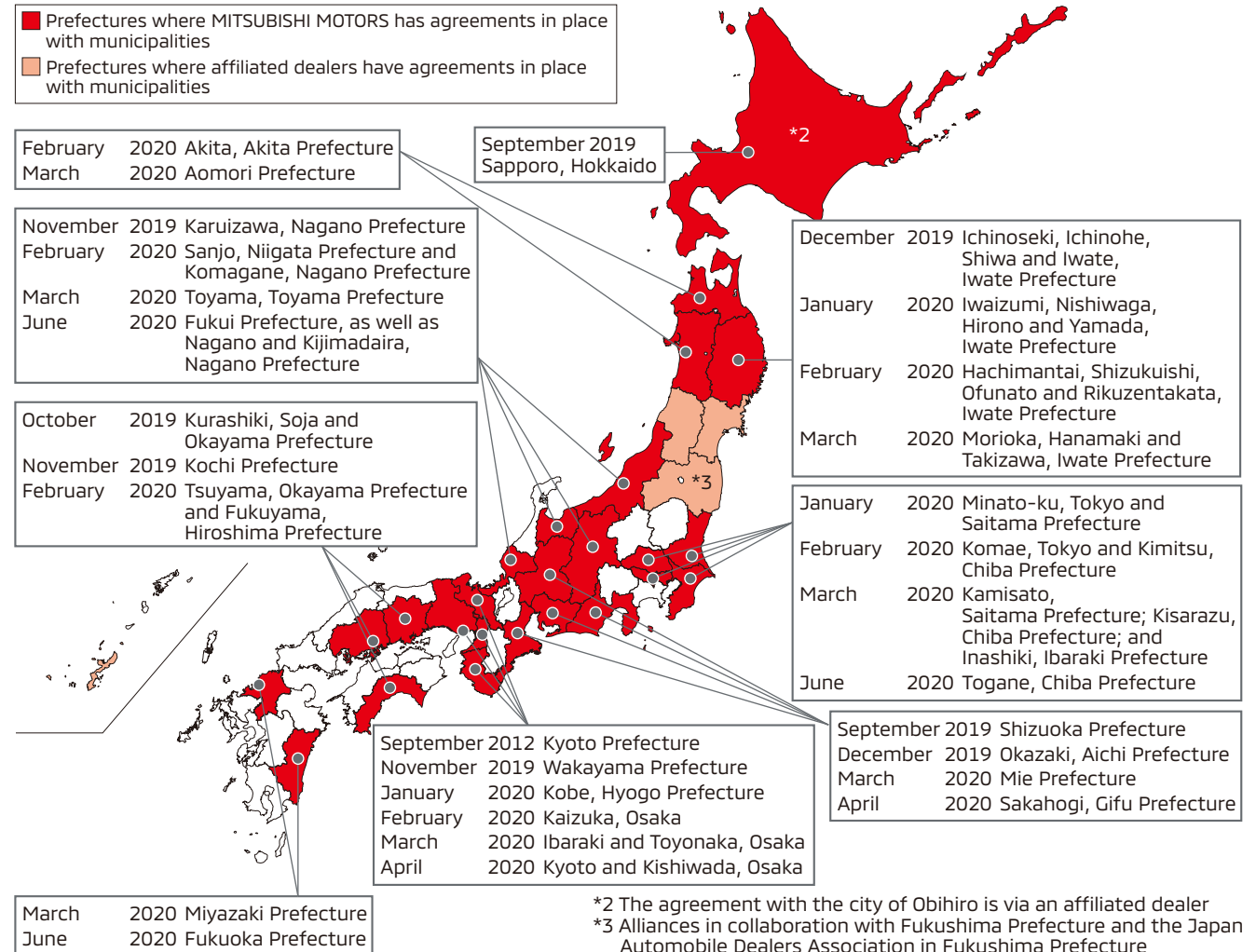


Okazaki, Aichi Prefecture



Minato-ku, Tokyo

Agreements in Place with Municipalities around Japan (As of June 30, 2020)



*2 The agreement with the city of Obihiro is via an affiliated dealer
*3 Alliances in collaboration with Fukushima Prefecture and the Japan Automobile Dealers Association in Fukushima Prefecture

◆Current agreement status

<https://www.mitsubishi-motors.com/jp/sustainability/contribution/society/relief/dendo-csp/>
(This site is only available in Japanese.)