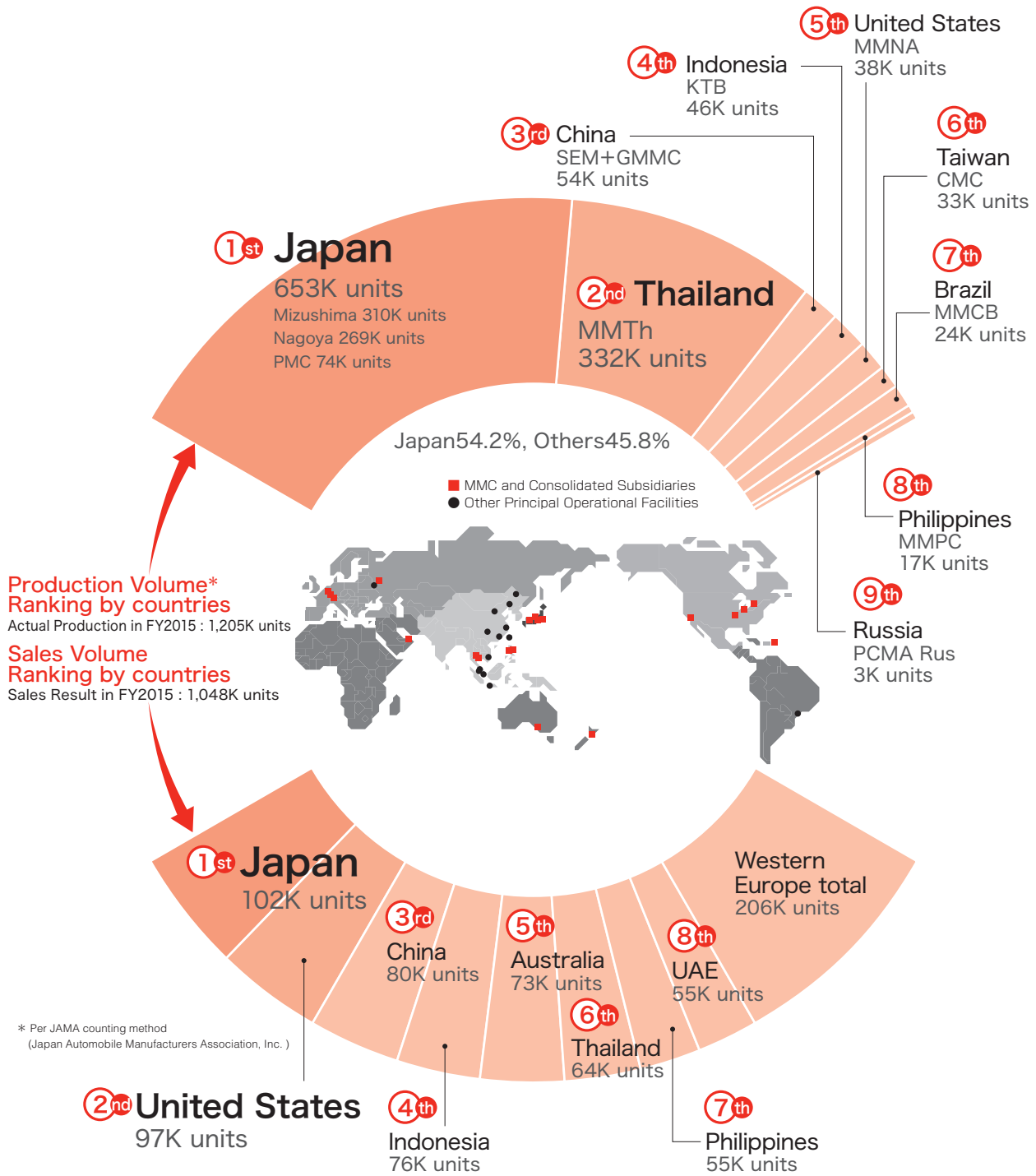
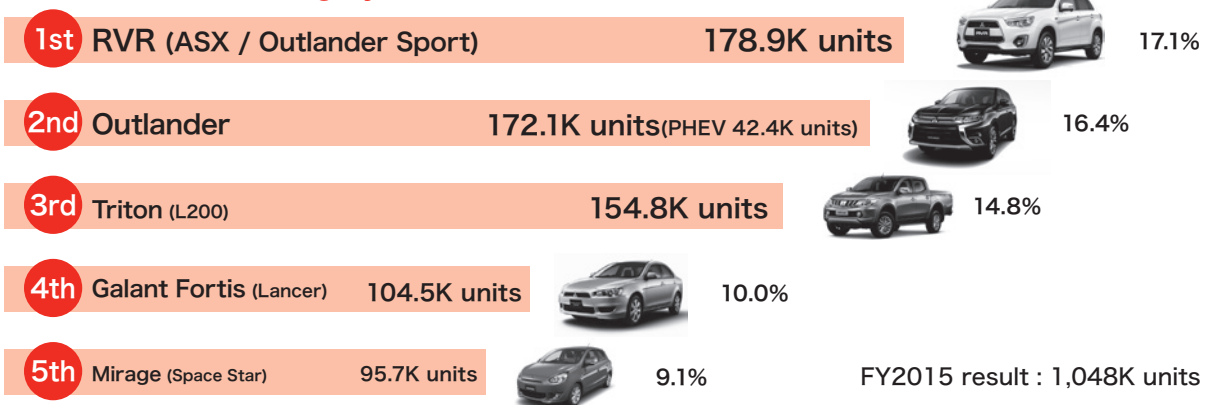


Production and Sales Volume Ranking by Countries

Sales Volume Ranking by Model



Sales Volume Ranking by Model



Net Sales, Production and Sales Volume by Region (MMC In-house Classification)

(Units: Net Sales = Millions of Yen; Volume = Vehicles)

MMC In-house Classification		2011	2012	2013	2014	2015
Japan	Net Sales.....	357,136	329,473	474,088	445,255	412,914
	Production Volume	585,860	484,428	637,079	648,595	652,966
	Sales Volume	151,323	134,021	143,212	114,774	101,924
North America	Net Sales.....	195,164	157,639	229,382	275,837	324,867
	Production Volume	31,114	47,837	69,766	61,974	38,186
	Sales Volume	106,337	84,718	96,988	116,897	135,170
Europe	Net Sales.....	474,783	400,707	484,300	514,388	514,569
	Production Volume	21,842	13,522	6,366	8,230	3,049
	Sales Volume	218,202	180,901	201,579	227,289	206,142
Asia & ASEAN & Other Regions	Net Sales.....	780,207	927,292	905,636	945,245	1,015,497
Asia & ASEAN	Production Volume* ¹	447,433	535,568	521,926	521,229	486,709
	Sales Volume	299,589	357,438	343,756	344,187	321,992
Middle East & Africa	Production Volume	2,011	—	1,920	180	—
	Sales Volume	65,877	70,862	81,447	106,759	126,653
Central & South America	Production Volume	40,290	40,260	31,916	34,532	23,898
	Sales Volume	93,328	95,397	103,551	101,001	74,936
Oceania	Sales Volume	66,474	64,027	76,623	78,804	81,574
Total	Net Sales	1,807,293	1,815,113	2,093,409	2,180,728	2,267,849
	Production Volume	1,128,550	1,121,615	1,268,973	1,274,740	1,204,808
	Sales Volume	1,001,130	987,364	1,047,156	1,089,711	1,048,391

Note: 1. Overseas production volume indicates the number of vehicles produced locally using parts shipped by MMC from Japan for assembly overseas (excludes Knocked Down production).

2. Figures in Oceania refer to the sum of those in Australia and New Zealand.

3. * 1 Overseas production volume: Locally branded models produced in China, which had been included in the output figures for China, have been excluded from the statistic since April 2012.

Global Production and Sales Volume

(Unit: Vehicles)

MMC In-house Classification		2011	2012	2013	2014	2015
Production Volume	Japan.....	585,860	484,428	637,079	648,595	652,966
	Other Regions* ¹	542,690	637,187	631,894	626,145	551,842
Total		1,128,550	1,121,615	1,268,973	1,274,740	1,204,808
Sales Volume	Japan Domestic.....	151,258	116,031	133,448	110,085	98,078
	Import.....	65	17,990	9,764	4,689	3,846
	Total	151,323	134,021	143,212	114,774	101,924
	Other Regions.....	849,807	853,343	903,939	974,937	946,467
Total		1,001,130	987,364	1,047,151	1,089,711	1,048,391

(Unit: Vehicles)

Japan Automobile Manufacturers Association, Inc. (JAMA) Classification		2011	2012	2013	2014	2015
Production Volume	Japan Passenger Vehicles.....	517,302	417,364	581,721	645,463	651,056
	Commercial Vehicles.....	68,558	67,064	55,358	3,132	1,910
	Total	585,860	484,428	637,079	648,595	652,966
	Other Regions* ¹	542,690	637,187	631,894	626,145	551,842
Global		1,128,550	1,121,615	1,268,973	1,274,740	1,204,808
Sales Volume	Japan Passenger Vehicles.....	113,757	101,293	111,078	97,857	86,492
	Commercial Vehicles.....	37,566	32,728	32,134	16,917	15,432
	Total	151,323	134,021	143,212	114,774	101,924
	Other Regions.....	849,807	853,343	903,939	974,937	946,467
Total		1,001,130	987,364	1,047,151	1,089,711	1,048,391

* 1 Overseas production volume: Locally branded models produced in China, which had been included in the output figures for China, have been excluded from the statistic since April 2012.