

FACTS & FIGURES 2014

English version

Drive@earth



Mitsubishi Motors Corporation Facts & Figures is published annually to help the media, researchers and analysts concerned with the auto industry better understand its activities.

All of us at Mitsubishi Motors hope that this publication will give all readers an even better understanding of the company and its products.

September 2014
Public Relations Department
Mitsubishi Motors Corporation

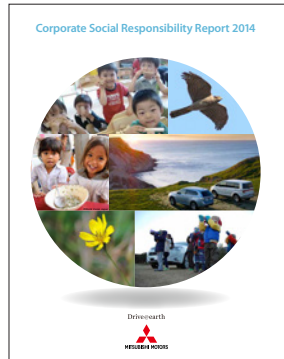
MMC is on the World Wide Web at the following URL

<http://www.mitsubishi-motors.com/en/corporate/>

Other information disclosure



Annual Report 2014



CSR Report 2014

The above publications can be also read on the MMC website as follows:

http://www.mitsubishi-motors.com/publish/ir_en/library/annual.html

<http://www.mitsubishi-motors.com/en/social/report/index.html>

Mitsubishi Motors Corporate Philosophy

"We are committed to providing the utmost driving pleasure and safety for our valued customers and our community.

On these commitments we will never compromise.

This is the Mitsubishi Motors way."

While, as a member of Mitsubishi Group, we carefully follow the Group's "The Three Principles," we also maintain our own corporate philosophy defining our own fundamental purposes and directions that include maintaining our "Corporate Responsibility to society," practicing "Integrity and Fairness" and promoting "International Understanding through Trade."

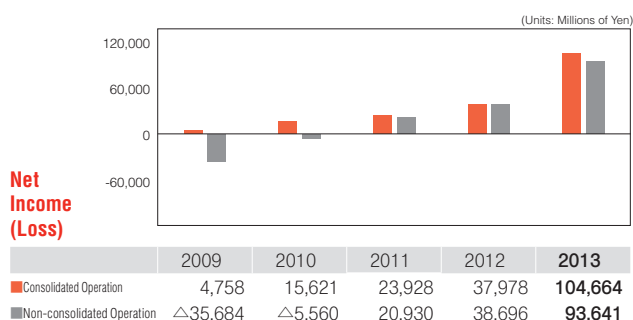
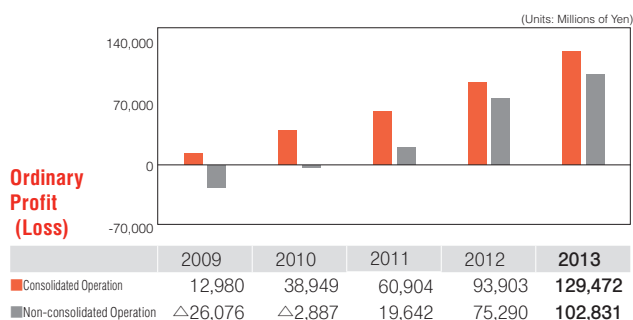
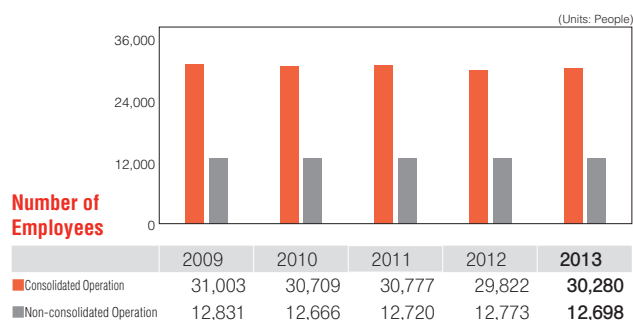
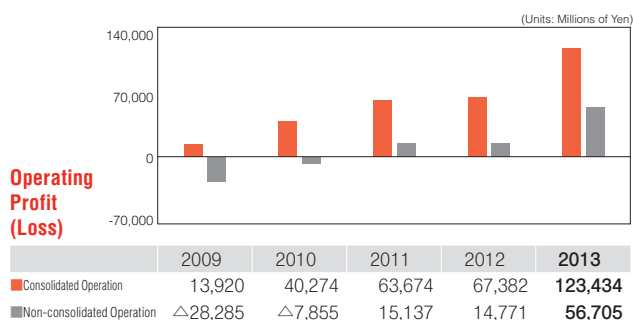
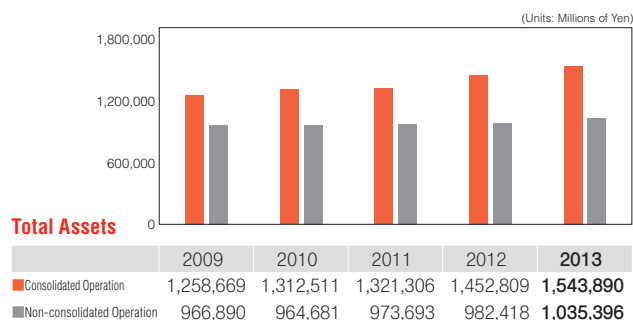
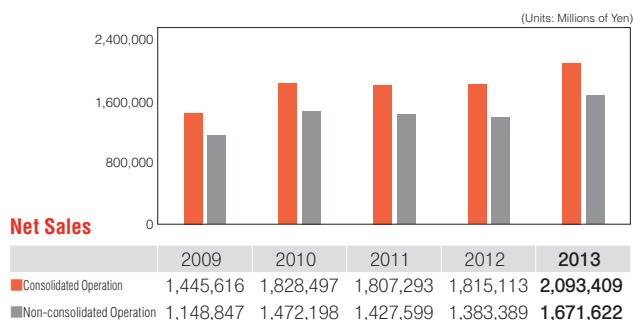
Contents

Company Overview / Investor Information	2
Principal Management Indices	3
Subsidiaries and Affiliates	4
Production and Sales Volume Ranking by Countries Sales Volume Ranking by Model	6
Activities by Region	
Japan	8
North America	12
Europe	14
Asia, ASEAN and Other Regions	17
Members of the Board and Executive Officers	25
Milestones	26
Products Over the Years (Japan)	28
Major Production and Sales Models	30

Company Overview		(As of March 31, 2014, unless specified otherwise)
Name	Mitsubishi Motors Corporation	
Established	April 22,1970	
Head office	33-8, Shiba 5-chome, Minato-ku, Tokyo 108-8410 Japan	
Number of employees	Consolidated 30,280 ; Non-consolidated 12,698	
Capitalization	JPY 165,701 million	
Purposes of incorporation	<div>1. Development, design, manufacture, assembly, sales and purchase, importing and other transactions relating to automobiles and to component parts and replacement parts of said automobiles.</div> <div>2. Development, design, manufacture, assembly, sales and purchase, importing and other transactions relating to agricultural machinery and industrial engines and to component parts and replacement parts of said agricultural machinery and industrial engines.</div> <div>3. Sales and purchase of used automobiles as well as component parts, replacement parts and accessories of said used automobiles.</div> <div>4. Sales of measuring equipment.</div> <div>5. Acting as insurance agents in accordance with laws relating to property damage insurance and to automobile damage indemnity insurance.</div> <div>6. Financing business.</div> <div>7. Any other business related to the purposes set out above.</div> <div>Note: MMC is not currently engaged in agricultural machinery related business</div>	
Chairman of the Board, CEO	[Representative Director] Osamu Masuko (As of June 26, 2014)	
President, COO	[Representative Director] Tetsuro Aikawa (As of June 26, 2014)	
Board of Management	Consists of 14 members (As of June 26, 2014)	
Net Sales	JPY 2093.4 billion (in FY2013, consolidated)	
Automotive Sales	1,047 thousands units	
Products Sold in	More than 160 countries	
Car Manufacturing Facilities	6 facilities in 4 countries (plus 12 manufacturing facilities run by business partners located in 11 countries and regions)	
Engine / Transmission Manufacturing Facilities	5 facilities in 3 countries (plus 3 manufacturing facilities run by business partners located in 2 countries)	
Research & Development / Design	8 facilities in 5 countries	
Subsidiaries and affiliates	43 consolidated subsidiaries (Plus 22 equity method affiliates)	
Global Brand	Mitsubishi Motors	
Investor Information		(As of March 31, 2014)
Total number of authorized shares	1,575,000,000	
Number of Issued Shares	983,661,919	
Number of Shareholders	379,041	
	*The minimum unit of shares held by shareholders is 100 shares.	

Principal Management Indices

As of March 31, 2014



Management Indices 2013

Consolidated Operations		Non-consolidated Operations	
Net Sales.....	2,093,409	Net Sales.....	1,671,622
Operating Profit.....	123,434	Operating Profit.....	56,705
Ordinary Profit.....	129,472	Ordinary Profit.....	102,831
Net Income.....	104,664	Net Income.....	93,641
Total Assets.....	1,543,890	Total Assets.....	1,035,396
Number of Employees.....	30,280	Number of Employees.....	12,698
Number of Consolidated Subsidiaries.....	43		
Number of Equity Method Affiliates.....	22		

Subsidiaries and Affiliates

As of March 31, 2014

Affiliates (43)

Consolidated Subsidiaries in Japan

Company	Location	Business Lines	Capitalization (Millions of Yen)	MMC Share of Voting Rights (%)
Hokkaido Mitsubishi Motors Sales Co., Ltd.	Hokkaido	Automobile sales	100	100.0
Higashi Nihon Mitsubishi Motors Sales Co., Ltd.	Fukushima	Automobile sales	100	100.0
Kanto Mitsubishi Motors Sales Co., Ltd.	Tokyo	Automobile sales	100	100.0
Chubu Mitsubishi Motors Sales Co., Ltd.	Aichi	Automobile sales	100	100.0
Nishi Nihon Mitsubishi Motors Sales Co., Ltd.	Osaka	Automobile sales	100	100.0
Pajero Manufacturing Co., Ltd.	Gifu	Automobile and parts manufacturing, sales	610	100.0
Mitsubishi Automotive Logistics Technology Co., Ltd.	Kanagawa	Automobile inspection and maintenance, transport, storage, packaging, automobile components/parts sales, etc.	436	83.2
Mitsubishi Automotive Engineering Co., Ltd.	Aichi	Design and testing of automobiles and parts	350	100.0
Suiryo Plastics Co., Ltd.	Okayama	Manufacture, sales of automobile parts	100	100.0

Note: Figures in parentheses in the "MMC Share of Voting Rights" column represent indirect shares.

Major Consolidated Subsidiaries Outside Japan

Company	Location	Business Lines	Capitalization (Millions)	MMC Share of Voting Rights (%)
Mitsubishi Motors North America, Inc. (MMNA)	U.S.A.	Automobile importing, manufacturing and sales	USD 398.8	100.0
Mitsubishi Motors R&D of America, Inc. (MRDA)	U.S.A.	Product development, design, testing and certification	USD 2.0	100.0 (100.0)
Mitsubishi Motor Sales of Canada, Inc. (MMSCAN)	Canada	Automobile importing and sales	USD 1.3	100.0 (100.0)
Mitsubishi Motors Credit of America, Inc. (MMCA)	U.S.A.	Automobile financing and leasing	USD 260.0	100.0 (100.0)
Mitsubishi Motor Sales of Caribbean, Inc. (MMSC)	Puerto Rico	Automobile importing and sales	USD 47.5	100.0
Mitsubishi Motors Europe B.V. (MME)	Netherlands	Automobile parts importing and sales	EUR 1,282.9	100.0
Mitsubishi Motor R&D Europe GmbH (MRDE)	Germany	Product development, design, testing and certification	EUR 0.8	100.0
Mitsubishi Motor Sales Netherlands B.V.	Netherlands	Automobile importing and sales	EUR 6.8	100.0
MMC International Finance (Netherlands) B.V.	Netherlands	Procurement of funds, group company financing	EUR 0.1	100.0
Mitsubishi Motors Australia, Ltd. (MMAL)	Australia	Automobile importing and sales	AUD 1,789.9	100.0
Mitsubishi Motors New Zealand Ltd. (MMNZ)	New Zealand	Automobile importing and sales	NZD 48.0	100.0
Mitsubishi Motors (Thailand) Co., Ltd. (MMTh)	Thailand	Automobile importing, assembly and sales	THB 7,000.0	100.0
MMTh Engine Co., Ltd.	Thailand	Manufacturing of automobile engine and pressed parts	THB 20.0	100.0 (100.0)
Mitsubishi Motors Philippines Corp. (MMPC)	Philippines	Automobile importing, assembly and sales	PHP 1,640.0	51.0
Asian Transmission Corp. (ATC)	Philippines	Manufacturing of automobile transmissions	PHP 770.0	94.7 (89.4)
Mitsubishi Motors Middle East and Africa FZE	U.A.E.	Importing and sales of automobile parts	UAD 10.0	100.0

MMC has 18 other subsidiaries outside Japan in addition to the above.

Note: Figures in parentheses in the "MMC Share of Voting Rights" column represent indirect shares.

Equity Method Affiliates (22)

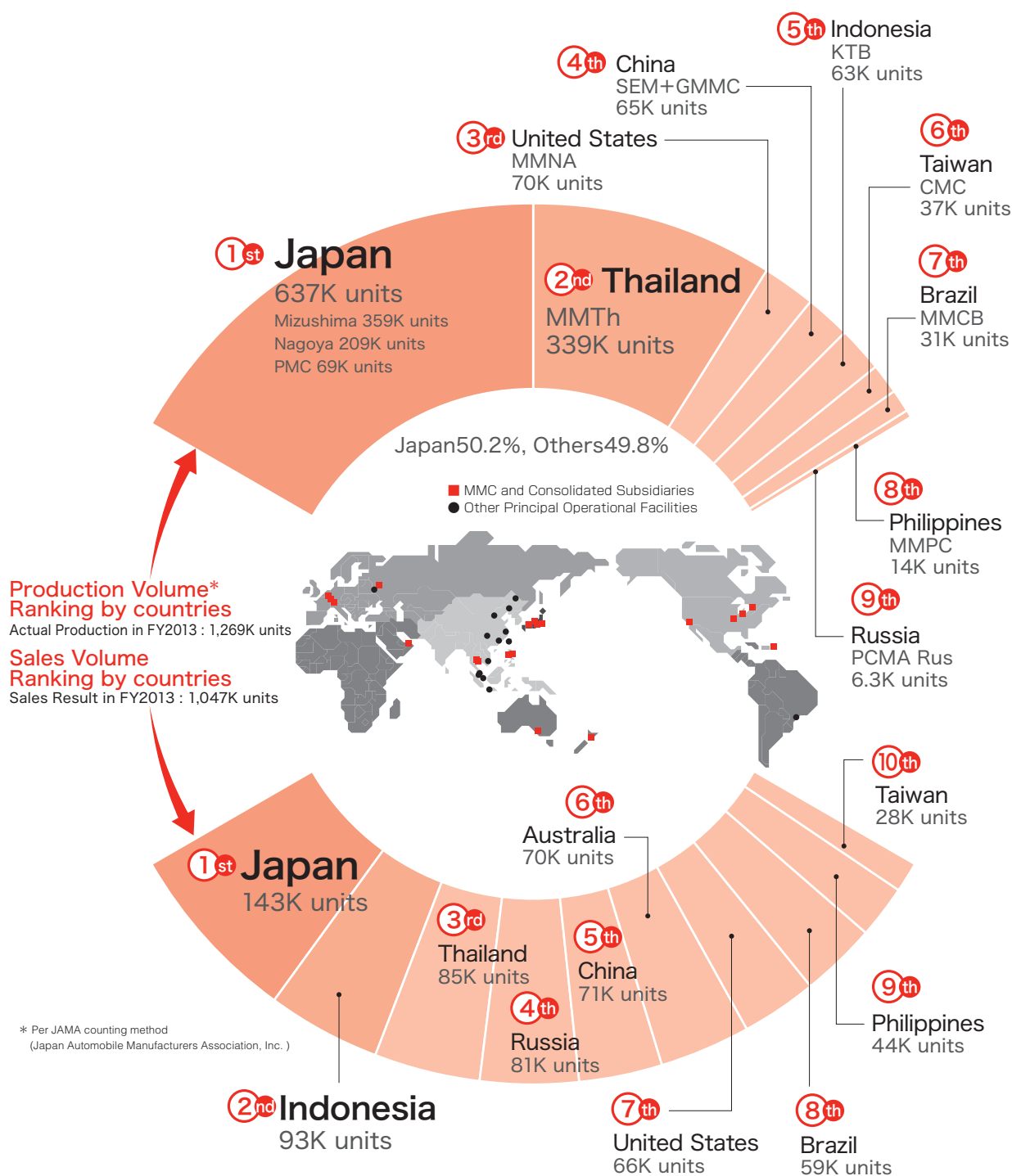
Company	Location	Business Lines	Capitalization (Millions of Yen /Millions)	MMC Share of Voting Rights (%)
Muroran Mitsubishi Motors Sales Co., Ltd.	Hokkaido	Automobile sales	100	29.0 (29.0)
Tokachi Mitsubishi Motors Sales Co., Ltd.	Hokkaido	Automobile sales	60	35.0
Ibaraki Mitsubishi Motors Sales Co., Ltd.	Ibaraki	Automobile sales	30	40.0
Mie Mitsubishi Motors Sales Co., Ltd.	Mie	Automobile sales	58	24.8
Kagawa Mitsubishi Motors Sales Co., Ltd.	Kagawa	Automobile sales	50	23.0
Miyazaki Mitsubishi Motors Sales Co., Ltd.	Miyazaki	Automobile sales	60	38.8
Higashi Kanto MMC Parts Sales Co., Ltd.	Chiba	Automobile parts sales	100	33.0 (10.0)
NMKV Co., Ltd.	Tokyo	Product planning and engineering of minicars	10	50
MMC Diamond Finance Corp.	Tokyo	Auto sales financing, leasing and rentals	3,000	47.0
MMD Automobile GmbH	Germany	Importing and sales of automobiles	EUR 30.0	24.99
Mitsubishi Motors do Portugal S.A.	Portugal	Importing and sales of automobiles	EUR 16.5	50.0 (50.0)
Vina Star Motors Corp.	Vietnam	Manufacturing and marketing of automobiles and parts	USD 16.0	25.0

MMC has 10 other affiliates in addition to the above.

Note: Figures in parentheses in the "MMC Share of Voting Rights" column represent indirect shares.

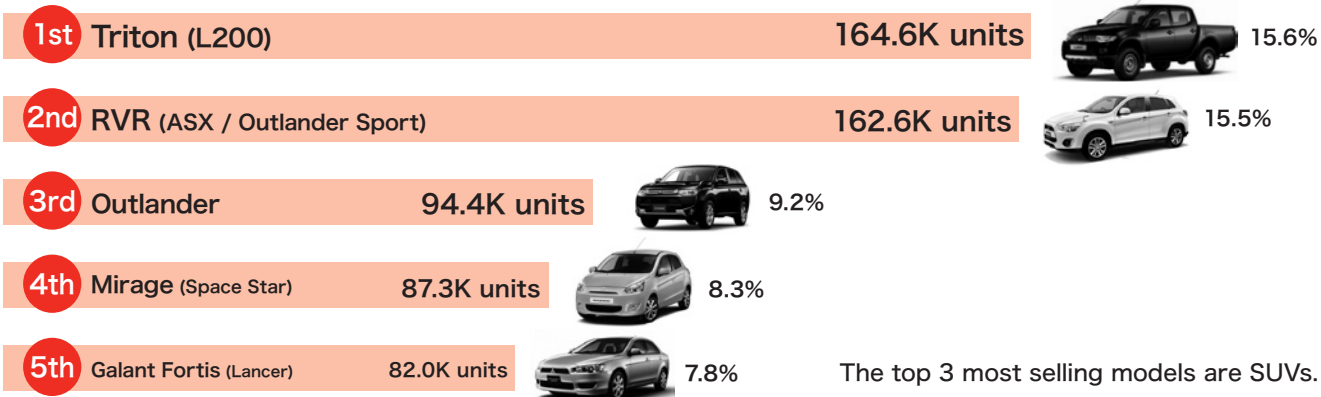
Production and Sales Volume Ranking by Countries

Sales Volume Ranking by Model



Sales Volume Ranking by Model

FY2013 result : 1,047K units



Net Sales, Production and Sales Volume by Region (MMC In-house Classification)

(Units: Net Sales = Millions of Yen; Volume = Vehicles)

MMC In-house Classification		2009	2010	2011	2012	2013
Japan	Net Sales.....	368,481	363,270	357,136	329,473	474,088
	Production Volume	513,585	663,320	585,860	484,428	637,079
	Sales Volume	170,692	163,470	151,323	134,021	143,211
North America	Net Sales.....	175,391	189,846	195,164	157,639	229,382
	Production Volume	22,696	32,846	31,114	47,837	69,766
	Sales Volume	87,642	93,950	106,337	84,718	96,988
Europe	Net Sales.....	269,221	490,030	474,783	400,707	484,300
	Production Volume	38,960	27,149	21,842	13,522	6,366
	Sales Volume	169,700	218,312	218,202	180,901	201,579
Asia & ASEAN & Other Regions		632,521	785,349	780,207	927,292	905,636
Asia & ASEAN	Production Volume* ¹	328,127	422,211	447,433	535,568	521,926
	Sales Volume (Conventional counting)	291,894	382,324	—	—	—
	Sales Volume (New counting)* ²	—	263,907	299,589	357,438	343,756
Middle East & Africa	Production Volume	3,898	4,227	2,011	—	1,920
	Sales Volume	108,706	94,081	65,877	70,862	81,432
Central & South America	Production Volume	35,430	35,970	40,290	40,260	31,916
	Sales Volume	69,470	85,148	93,328	95,397	103,420
Oceania	Production Volume	—	—	—	—	—
	Sales Volume	61,970	67,703	66,474	64,027	76,623
Total	Net Sales	1,445,614	1,828,497	1,807,293	1,815,113	2,093,409
	Production Volume	942,696	1,185,723	1,128,550	1,121,615	1,268,973
	Sales Volume (Conventional counting)	960,074	1,104,988	—	—	—
	Sales Volume (New counting)* ²	—	986,571	1,001,130	987,364	1,047,009

Note: 1. Overseas production volume indicates the number of vehicles produced locally using parts shipped by MMC from Japan for assembly overseas (excludes Knocked Down production).

2. Puerto Rico included in North America up until FY2007 and classified into Central and South America, effective from FY2008.

3. Figures in Oceania refer to the sum of those in Australia and New Zealand.

4. * 1 Overseas production volume: Locally branded models produced in China, which had been included in the output figures for China, have been excluded from the statistic since April 2012.

5. * 2 The new method of counting the number of units sold (the retail sales volume) was adopted, effective FY2011: Conventionally, the sales volume included products designed by MMC which were sold under other companies' brands and MMC earned royalty income on, but under the new counting method, only MMC branded products are counted in the sales volume.

Global Production and Sales Volume

(Unit: Vehicles)

MMC In-house Classification		2009	2010	2011	2012	2013
Production Volume	Japan.....	513,585	663,320	585,860	484,428	637,079
	Other Regions* ¹	429,111	522,403	542,690	637,187	631,894
	Total	942,696	1,185,723	1,128,550	1,121,615	1,268,973
Sales Volume	Japan Domestic.....	170,515	163,320	151,258	116,031	133,448
	Import.....	177	150	65	17,990	9,763
	Total	170,692	163,470	151,323	134,021	143,211
	Other Regions (Conventional counting)	789,382	941,518	—	—	—
	Other Regions (New counting)* ²	—	823,101	849,807	853,343	903,798
Total (Conventional counting)		960,074	1,104,988	—	—	—
Total (New counting)* ²		—	986,571	1,001,130	987,364	1,047,009

(Unit: Vehicles)

Japan Automobile Manufacturers Association, Inc. (JAMA) Classification		2009	2010	2011	2012	2013
Production Volume	Japan Passenger Vehicles.....	438,162	590,083	517,302	417,364	581,721
	Commercial Vehicles.....	75,423	73,237	68,558	67,064	55,358
	Total	513,585	663,320	585,860	484,428	637,079
	Other Regions* ¹	429,111	522,403	542,690	637,187	631,894
Global		942,696	1,185,723	1,128,550	1,121,615	1,268,973
Sales Volume	Japan Passenger Vehicles.....	128,130	120,124	113,757	101,293	111,077
	Commercial Vehicles.....	42,562	43,346	37,566	32,728	32,134
	Total	170,692	163,470	151,323	134,021	143,211
	Other Regions (Conventional counting)	789,382	941,518	—	—	—
	Other Regions (New counting)* ²	—	823,101	849,807	853,343	903,798
Total (Conventional counting)		960,074	1,104,988	—	—	—
Total (New counting)* ²		—	986,571	1,001,130	987,364	1,047,009

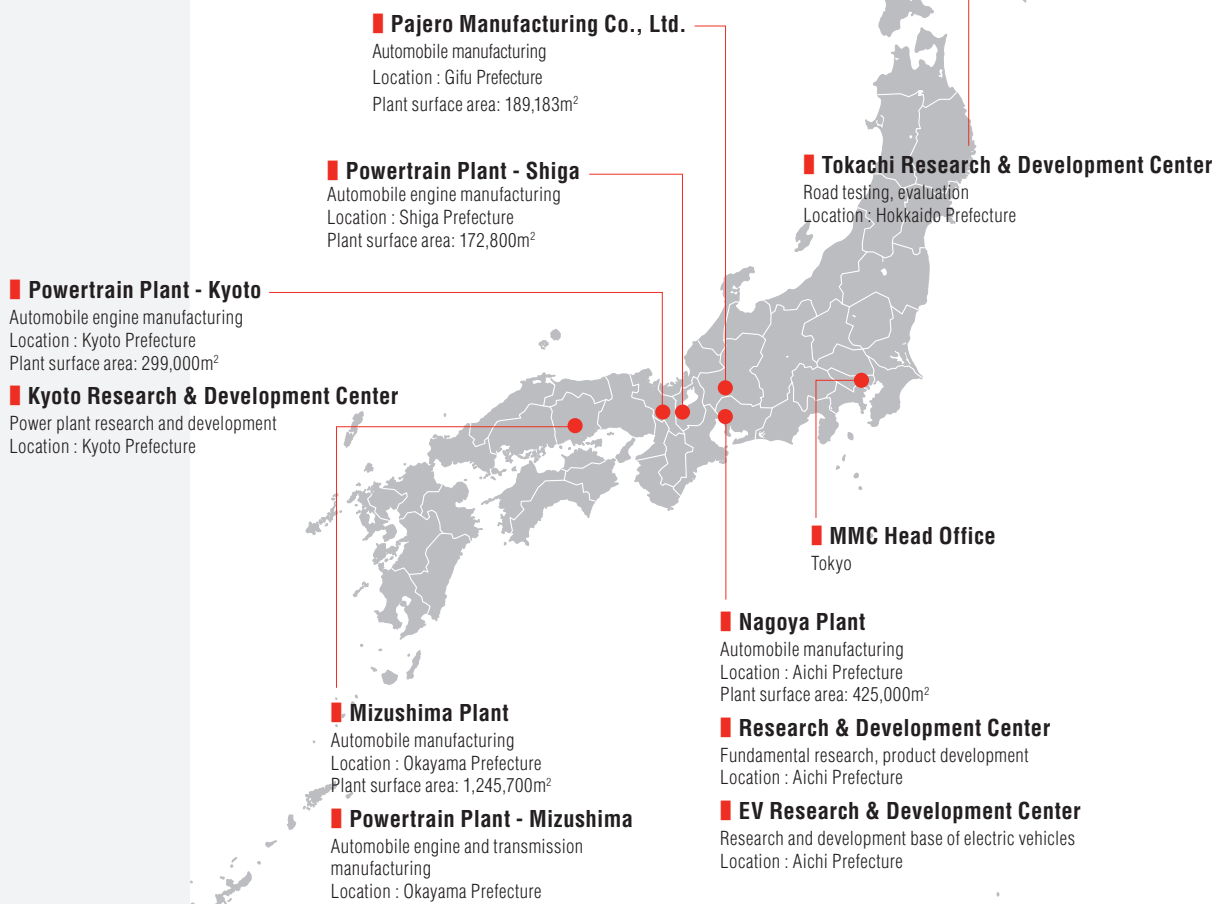
* 1 Overseas production volume: Locally branded models produced in China, which had been included in the output figures for China, have been excluded from the statistic since April 2012.

* 2 The new method of counting the number of units sold (the retail sales volume) was adopted, effective FY2011: Conventionally, the sales volume included products designed by MMC which were sold under other companies' brands and MMC earned royalty income on, but under the new counting method, only MMC branded products are counted in the sales volume.

Activities by Region

Japan

Principal Operational Facilities in Japan



Manufacturing Facilities

- Nagoya Plant
- Mizushima Plant
- Pajero Manufacturing Co., Ltd. (PMC)

Engine Manufacturing

- Powertrain Plant Kyoto, Shiga, Mizushima

Transmission Manufacturing

- Powertrain Plant Mizushima

R&D Facilities

R&D

- Research & Development Center
- Kyoto Research & Development Center
- Tokachi Research & Development Center

Sales Organization

Sales Companies: 105

Consolidated Subsidiaries 5, Independent Dealerships 100

New Car Sales Outlets: 671

(As of April 1, 2014)

■ MMC and Consolidated Subsidiaries

Production Volume by Model

(Unit: Vehicles)

Production Facility / Assembler	Model	2009	2010	2011	2012	2013
■ Nagoya Plant	Grandis.....	6,802	4,377	—	—	—
	New Model Outlander.....	—	—	—	75,665	99,594
	New Model Outlander PHEV.....	—	—	—	4,621	30,123
	RVR* ¹	6,915	134,004	145,608	103,603	79,381
	Colt.....	17,831	10,651	7,699	1,187	—
■ Mizushima Plant	Colt Plus.....	8,207	5,088	3,105	469	—
	Outlander* ¹ , * ²	98,692	124,345	96,261	25,709	575
	Galant Fortis (Lancer)* ³	112,184	120,064	93,647	76,598	73,565
	Lancer* ⁴	38,513	27,512	16,841	23,983	16,237
	Old Model Mirage.....	960	—	—	—	—
	Delica* ⁴	8,153	7,830	6,947	7,158	8,607
	i.....	6,344	4,655	3,651	2,340	212
	i-MiEV* ¹	1,710	8,496	14,795	4,064	2,423
	Minica.....	11,111	12,057	1,138	—	—
	Pajero Mini* ¹	11,195	9,165	9,681	5,862	—
	eK Wagon* ¹	50,914	43,073	38,439	33,920	1,300
	New Model eK Wagon* ⁵	—	—	—	—	177,677
	Toppo.....	12,969	10,825	7,410	5,155	56
	eK Space* ⁵	—	—	—	—	29,558
	Town Box* ¹	3,892	3,086	2,542	—	—
	minicab* ¹	48,206	52,134	56,814	59,862	48,366
	MINICAB-MiEV* ¹	—	—	4,112	828	220
	MINICAB-MiEV Truck.....	—	—	—	660	69
■ PMC	Pajero.....	48,055	66,569	61,603	39,759	55,066
	Delica D:5.....	18,008	16,674	14,760	12,451	13,518
	Challenger.....	2,364	2,154	42	—	—
	Jeep.....	534	562	765	534	532
Registered Vehicle Total		367,218	519,830	447,278	371,737	377,198
Minicar Total		146,341	143,491	138,582	112,691	259,881
Total		513,559	663,321	585,860	484,428	637,079

■ MMC and Consolidated Subsidiaries

Note: Figures in the table are totals of built-up and knockdown production

*¹ Including commissioned OEM production

*² Including production at the Nagoya Plant

*³ Including Lancer Evolution and Sportback

*⁴ Including Lancer Evolution, Wagon and Cargo

*⁵ Including jointly-developed vehicle production

Sales Volume by Model

(Unit: Vehicles)

Production Facility / Assembler	Model	2009	2010	2011	2012	2013
■ Nagoya Plant	New Model Outlander	—	—	—	3,096	2,781
	New Model Outlander PHEV	—	—	—	4,304	8,968
	RVR	5,505	10,159	5,405	4,350	2,778
	Colt	15,546	10,660	6,704	1,429	18
	Colt Plus	7,116	5,435	2,926	552	—
	Grandis	5	—	—	—	—
■ Mizushima Plant	Others	1	—	2	—	—
	Outlander *1	7,638	6,852	4,249	1,039	—
	Galant Fortis	2,460	1,763	1,580	1,309	1,067
	Galant Fortis Sportback	1,769	994	878	537	469
	Lancer Evolution X	1,109	873	892	667	709
	Lancer Cedia	1,227	116	—	1	—
	Lancer Cargo	10	—	—	1	—
	i	6,439	4,685	3,828	2,328	472
	i-MiEV	1,426	2,541	2,552	2,205	1,099
	Minica	10,656	10,761	3,293	46	5
	Pajero Mini	8,646	8,056	8,281	6,081	24
	eK Wagon	33,735	35,063	30,985	26,077	2,925
	New Model eK Wagon	—	—	—	—	50,847
	eK Space	—	—	—	—	4,517
	Toppo	13,469	10,949	8,110	4,873	637
	Town Box	2,171	2,125	1,636	16	168
	minicab	28,909	29,992	30,173	28,463	29,445
	MINICAB-MiEV	—	—	2,026	2,026	1,006
	MINICAB-MiEV Truck	—	—	—	486	181
	Others	4	3	32	5	2
■ PMC	Pajero	2,198	2,948	3,209	2,029	2,213
	Delica D:5	17,664	15,231	15,354	12,592	13,856
■ MMTh	Triton	176	150	65	—	—
	Mirage	—	—	—	17,990	9,763
OEM Supplied by Nissan	Dignity	—	—	—	61	119
	Proudia	—	—	—	279	26
	Delica D:3	—	—	546	443	304
	Delica	—	—	—	526	353
	Lancer Cargo	1,412	1,394	1,261	1,174	1,144
OEM Supplied by Suzuki	Delica D:2	—	1,671	16,587	9,028	7,315
OEM Supplied by Mazda	Delica	1,399	1,048	749	8	—
Total Registered Vehicles		65,239	59,297	60,439	61,420	51,885
Total Minicars		105,451	104,172	90,884	72,601	91,326
Total Domestically Produced Vehicles		170,514	163,319	151,258	116,031	133,448
Total Imported Vehicles		176	150	65	17,990	9,763
Total		170,690	163,469	151,323	134,021	143,211
Total Japanese Market Volume		4,752,468	4,463,007	4,595,143	5,210,290	5,630,800

■ MMC and Consolidated Subsidiaries

* 1 Including production at the Nagoya Plant

Export Shipments by Region (MMC In-house Classification)

(Unit: Vehicles)

	2009	2010	2011	2012	2013
North America.....	63,336	70,716	70,343	46,698	51,344
Europe.....	68,389	199,236	184,295	150,303	133,966
Asia, ASEAN & Other Regions.....	165,250	202,221	164,567	148,098	169,407
Asia & ASEAN	42,501	60,078	43,748	31,716	43,558
Middle East & Africa.....	55,108	54,189	30,426	41,359	48,881
Central & South America.....	21,997	38,916	46,295	38,472	39,021
Oceania.....	45,644	49,038	44,098	36,551	37,947
Total	296,975	472,173	419,205	345,099	354,717

Note: Export shipments are the total of built-up vehicles and knockdown kits.

Export Shipments by Model

(Unit: Vehicles)

Production Facility / Assembler	Model	2009	2010	2011	2012	2013
■ Nagoya Plant	Grandis.....	6,653	4,548	—	—	—
	New Model Outlander	—	—	—	69,628	98,123
	New Model Outlander PHEV.....	—	—	—	—	19,628
	RVR* ¹	6	121,374	140,679	102,351	85,643
	Colt	1,268	1,275	1,100	—	—
	Colt Plus	354	319	315	—	—
	Others	1,607	30	—	—	—
■ Mizushima Plant	Outlander* ¹	89,919	116,672	93,828	25,677	1,010
	Galant Fortis* ²	106,527	116,468	89,366	75,610	70,453
	Lancer* ³	35,296	31,380	16,459	24,143	16,908
	Delica.....	7,999	8,035	6,810	7,110	8,611
	i.....	36	—	—	—	—
	i-MiEV* ¹	164	5,636	11,618	2,104	1,887
	MINICAB-MiEV	—	—	—	20	—
	Others	—	—	22	—	—
■ PMC	Pajero.....	44,896	64,207	58,842	38,300	52,199
	Challenger	2,245	2,205	110	—	—
	Delica D:5	5	24	56	156	255
Total		296,975	472,173	419,205	345,099	354,717

■ MMC and Consolidated Subsidiaries

Note: Export shipments are the total of built-up vehicles and knockdown kits.

"Others" refers to models produced in Japan which are not listed in the above table.

*1 Including commissioned OEM production

*2 Including Lancer Evolution and Sportback

*3 Including Lancer Wagon

Activities by Region

North America

Principal Operational Facilities in North America

Supervision of Operations

■ MMNA (Head Office)

Mitsubishi Motors North America, Inc.

Location: Cypress, California

Capitalization: USD 398.8 million

Activities: Automobile importing, manufacturing, sales and export

Shareholders: MMC 100.0%

Sales Organization (United States)

Sales Outlets: 386

Sales Financing

■ MMCA

Mitsubishi Motors Credit of America, Inc.

Location: Cypress, California

Capitalization: USD 260.0 million

Activities: Automobile financing and leasing

Shareholders: MMNA 100.0%

Sales Organization (Canada)

Sales Outlets: 88

Distributor

■ MMSCAN

Mitsubishi Motor Sales of Canada, Inc.

Location: Mississauga, Ontario

Capitalization: USD 1.3 million

Activities: Automobile importing and sales

Shareholders: MMNA 100.0%

R&D Facility

■ MRDA

Mitsubishi Motors R&D of America, Inc.

Location: Ann Arbor, Michigan

Capitalization: USD 2.0 million

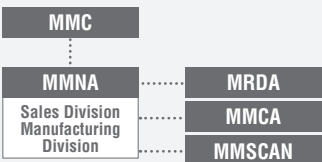
Activities: Market research, product development, design, testing and certification

Shareholders: MMNA 100.0%

■ MMNA (Manufacturing)

Mitsubishi Motors North America, Inc.

Production Facility Location: Normal, Illinois



----- Consolidated Subsidiaries

(As of March 31, 2014)

■ MMC and Consolidated Subsidiaries

North America

Sales Volume by Country

(Unit: Vehicles)

Country	2009	2010	2011	2012	2013
U.S.A.....	53,775	62,227	75,460	57,179	66,071
Canada.....	20,062	19,558	20,695	19,385	21,119
Mexico.....	13,805	12,165	10,182	8,154	9,798
Total	87,642	93,950	106,337	84,718	96,988
Total Market Volume*1	13,022,431	14,508,954	15,725,894	17,382,763	18,463,064

*1 Sales figures in U.S.A, Canada and Mexico. (Passenger Cars + Light Commercial Vehicles).

Sales Volume by Model

(Unit: Vehicles)

Production Facility / Assembler	Model	2009	2010	2011	2012	2013
■ MMNA (Illinois, U.S.A.)	Endeavor.....	5,279	5,948	9,708	321	—
	Galant.....	13,978	15,300	13,530	8,525	914
	Eclipse / Eclipse Spyder.....	5,890	5,333	7,916	932	67
	RVR (Outlander Sport).....	—	—	—	11,728	35,521
■ Japan	Pajero (Montero).....	78	441	342	325	250
	Grandis.....	298	1	—	—	—
	Outlander.....	23,990	23,001	17,830	16,019	6,007
	New Model Outlander.....	—	—	—	—	14,977
	Airtrek.....	1	—	—	—	—
	Galant Fortis (Lancer)*1.....	34,316	33,289	30,314	28,355	27,400
	Lancer.....	1	1	—	—	—
	RVR (Outlander Sport).....	—	8,127	23,763	14,130	—
	i-MiEV (i).....	—	—	285	1,262	589
■ MMTh (Thailand)	Triton (L200).....	2,081	2,089	2,231	2,747	2,871
	Pajero Sport.....	536	417	418	374	259
	Challenger.....	6	—	—	—	—
	Mirage.....	—	—	—	—	8,133
OEM Supplied by Chrysler Raider.....		1,188	3	—	—	—
Total		87,642	93,950	106,337	84,718	96,988

■ MMC and Consolidated Subsidiaries

Note: () in the model column indicates the local name of each model.

*1 Including Lancer Evolution and Sportback

U.S.A

Production Volume by Model

(Unit: Vehicles)

Production Facility / Assembler	Model	2009	2010	2011	2012	2013
■ MMNA (Illinois, U.S.A.)	Endeavor.....	5,401	6,444	8,607	—	—
	Galant.....	15,017	19,229	17,551	7,839	—
	Eclipse / Eclipse Spyder.....	2,278	7,173	4,956	—	—
	RVR (Outlander Sport).....	—	—	—	39,998	69,766
Total		22,696	32,846	31,114	47,837	69,766

■ MMC and Consolidated Subsidiaries

Sales Volume by Model

(Unit: Vehicles)

Production Facility / Assembler	Model	2009	2010	2011	2012	2013
■ MMNA (Illinois, U.S.A.)	Endeavor.....	4,057	4,433	8,324	255	—
	Galant.....	13,265	15,163	13,507	8,525	914
	Eclipse / Eclipse Spyder.....	4,955	4,277	7,236	753	67
	RVR (Outlander Sport).....	—	—	—	9,401	26,965
■ Japan	Galant Fortis (Lancer)*1.....	19,592	21,273	19,717	18,528	18,026
	Outlander.....	10,718	11,632	9,637	8,650	2,512
	New Model Outlander.....	—	—	—	—	10,435
	RVR (Outlander Sport).....	—	5,446	16,823	9,990	—
	i-MiEV (i).....	—	—	216	1,077	432
■ MMTh (Thailand)	Mirage.....	—	—	—	—	6,720
OEM Supplied by Chrysler Raider.....		1,188	3	—	—	—
Total		53,775	62,227	75,460	57,179	66,071
Total Market Volume		10,770,741	12,103,435	13,185,591	14,712,357	15,649,198

■ MMC and Consolidated Subsidiaries

Note: () in the model column indicates the local name of each model.

*1 Including Lancer Evolution and Sportback

Activities by Region

Europe

Principal Operational Facilities in Europe

Supervision of Operations

■ MME

Mitsubishi Motors Europe B.V.

Location: Born, Netherlands

Capitalization: EUR 1,282.9 million

Activities: After-sales services, imports and sales of automobile parts

Shareholders: MMC 100.0%

Production Facility

■ PCMA Rus

PCMA RUS Limited Company

Location: Kaluga, Russia

Capitalization: EUR 300.0 million

Activities: Manufacturing of automobiles

Shareholders: PSA Peugeot Citroën 70.0%, MMC 30.0%

R&D Facility

■ MRDE

Mitsubishi Motor R&D Europe GmbH (MRDE)

Location: Trebur, Germany

Capitalization: EUR 0.8 million

Activities: Research, testing and investigation about automobiles

Shareholders: MME 100.0%

Sales Organization

Distributors :41

Sales Outlets :2,100 sales outlets approx.

(As of March 31, 2014)

■ MMC and Consolidated Subsidiaries

Production Volume by Model

(Unit: Vehicles)

Production Facility / Assembler	Model	2009	2010	2011	2012	2013
■ NedCar (Netherlands)* ¹	Colt	38,960	27,149	21,842	13,522	—
Total		38,960	27,149	21,842	13,522	—

■ MMC and Consolidated Subsidiaries

* 1 SKD (Semi Knocked Down) production of Outlander is included as production in Japan according to the definition of SKD by Japan Automobile Manufacturers Association. Vehicle production at NedCar ended in December 2012.

Sales Volume by Country

(Unit: Vehicles)

Country	2009	2010	2011	2012	2013
Germany	23,877	28,589	29,327	22,135	21,780
United Kingdom.....	18,176	19,891	14,915	12,349	14,816
Norway.....	3,802	7,049	8,409	5,697	6,085
France.....	3,897	6,444	6,012	5,260	5,215
Italy	5,152	8,525	7,716	4,532	3,533
Switzerland.....	3,910	5,113	5,206	4,391	4,159
Turkey.....	3,609	6,809	6,687	4,004	4,962
Spain.....	7,421	10,411	6,812	3,950	4,027
Austria.....	3,011	4,981	4,739	3,894	4,073
Sweden	3,732	6,172	6,301	3,819	3,437
Belgium.....	3,622	5,264	5,250	3,815	3,463
Poland	8,742	10,108	6,978	3,697	3,969
Netherlands.....	4,921	6,732	5,922	3,285	13,682
Israel.....	5,489	8,985	5,370	2,632	9,186
Portugal	3,832	4,960	2,325	1,428	1,643
Greece.....	4,061	1,801	1,304	655	429
Denmark	2,793	2,968	1,919	492	246
Russia.....	38,783	55,426	72,715	80,368	81,449
Ukraine.....	9,539	7,786	8,827	5,660	5,437
Kazakhstan.....	2,232	874	1,353	2,343	3,552
Others	9,099	9,424	10,115	6,495	6,436
Total	169,700	218,312	218,202	180,901	201,579
Total Market Volume*1	16,259,790	15,277,103	14,931,608	13,606,152	14,045,165

The top 20 countries in sales volume in FY2012 among the 40 countries where MMC operates its business in Europe,

*1 The total market volume represents the sum of the sales volumes of 27 EU countries and 3 EFTA countries. (Passenger Cars + Light Commercial Vehicles).

Sales Volume by Model

(Unit: Vehicles)

Production Facility / Assembler	Model	2009	2010	2011	2012	2013
■ NedCar (Netherlands)	Colt	40,058	29,869	23,211	16,731	4,194
PF (Italy)	Colt CZC Cabriolet.....	1,281	31	2	—	—
■ Japan	Pajero.....	11,234	14,111	19,271	14,826	12,657
	Challenger (Pajero Sport).....	848	2	—	—	—
	Delica (L300)	622	19	—	—	—
	Grandis.....	3,951	3,641	359	10	—
	New Model Outlander *4.....	—	—	—	26,402	49,901
	New Model Outlander PHEV.....	—	—	—	—	10,624
	Outlander *1.....	34,547	41,962	39,218	17,190	1,067
	Airtrek (Outlander).....	969	200	—	—	—
	Galant Fortis (Lancer) *2.....	43,196	44,004	28,347	18,432	11,378
	Lancer *3.....	6,920	446	3	—	—
	RVR (ASX) *5	—	47,315	67,115	52,633	56,735
	i.....	6	—	—	—	—
	i-MiEV	25	1,310	1,828	1,609	919
■ MMNA (U.S.A)	Galant.....	1,696	789	45	—	—
■ MMTh (Thailand)	Triton (L200).....	21,758	29,673	29,252	21,997	23,039
	Pajero Sport *4.....	2,589	4,940	9,551	8,787	10,290
	Mirage (Space Star)	—	—	—	2,284	19,794
	Attrage.....	—	—	—	—	981
Total		169,700	218,312	218,202	180,901	201,579

■ MMC and Consolidated Subsidiaries

Note: () in the model column indicates the local name of each model.

*1 Figures include SKD (Semi Knocked Down) production at NedCar

*2 Including Lancer Evolution and Sportback

*3 Including Lancer Wagon

*4 Including production at PCMA Rus since FY2013.

*5 Including production at MMNA since FY2012.

Russian Federation

Production Volume by Model

(Unit: Vehicles)

Production Facility / Assembler	Model	2009	2010	2011	2012	2013
PCMA Rus	Outlander*1, *2.....	—	7,491	15,059	4,982	—
	New Model Outlander*1.....	—	—	—	5,326	19,149
	Pajero Sport.....	—	—	—	—	6,170
Total		—	7,491	15,059	10,308	25,319

*1 Included as the production in Japan according to the definition by Japan Automobile Manufacturers Association.

*2 Including commissioned OEM production

Sales Volume by Model

(Unit: Vehicles)

Production Facility / Assembler	Model	2009	2010	2011	2012	2013
■ NedCar (Netherlands)	Colt.....	307	267	5	—	—
	Pajero.....	2,845	3,897	10,312	8,745	6,628
■ Japan	Grandis.....	207	155	—	—	—
	Challenger (Pajero Sport).....	3,204	—	—	—	—
	New Model Outlander*1.....	—	—	—	17,434	28,899
	Outlander*1.....	9,963	16,349	18,746	5,979	2
	Airtrek (Outlander).....	3	—	—	—	—
	Galant Fortis (Lancer)*2.....	13,794	14,987	11,891	12,335	6,531
	Lancer*3.....	4,680	70	2	—	—
	i-MiEV.....	—	—	61	40	116
	Galant.....	836	277	4	—	—
	RVR (ASX)*4.....	—	10,426	16,993	22,449	24,910
■ MMNA (U.S.A)	Triton (L200).....	2,944	4,841	6,847	5,930	5,758
	Pajero Sport.....	—	4,157	7,854	7,456	8,605
Total		38,783	55,426	72,715	80,368	81,449
Total Market Volume		898,623	1,356,335	1,955,802	2,175,765	2,135,901

■ MMC and Consolidated Subsidiaries

Note: () in the model column indicates the local name of each model.

*1 Including production at PCMA Rus

*2 Including Lancer Evolution and Sportback

*3 Including Lancer Wagon

*4 Including production in Japan since FY2012

Activities by Region

Asia, ASEAN and Other Regions

Principal Operational Facilities in Southeast Asia



(As of March 31, 2014)

MC: Mitsubishi Corporation

■ MMC and Consolidated Subsidiaries

Asia, ASEAN

Production Volume by Model

(Unit: Vehicles)

Production Facility / Assembler	2009	2010	2011	2012	2013
■ MMTh (Thailand)	129,463	199,760	221,450	393,910	339,319
■ MMPC (Philippines)	10,628	14,281	13,160	12,529	14,484
KRM (Indonesia)	24,744	43,992	55,774	61,140	63,186
PROTON (Malaysia)	1,562	393	—	—	—
CMC (Taiwan)	45,135	46,772	47,928	37,666	37,096
SEM (China)	108,168	113,372	105,558	19,954	18,119
GMMC (China) * ¹	2,716	2,108	2,250	—	47,267
HHMC (China) * ²	5,126	1,083	—	—	—
HML (India)	585	450	383	1,500	1,530
PIL (Bangladesh)	—	—	150	120	296
VSM (Vietnam)	—	—	780	544	629
Total	328,127	422,211	447,433	535,568	521,926

■ MMC and Consolidated Subsidiaries

KRM: P.T. Krama Yudha Ratu Motors

PROTON: PROTON Holdings Berhad

CMC: China Motor Co., Ltd.

SEM: South East (Fujian) Motor Co., Ltd.

GMMC: GAC Mitsubishi Motors Co., Ltd.

HHMC: Harbin Hafei Motor Co., Ltd.

BBDC: Beijing Benz-DaimlerChrysler Automotive Co., Ltd.

HML: Hindustan Motors Limited

PIL: Pragati Industries Limited

VSM: Vina Star Motors Corporation

Note: Production volume indicates number of vehicles produced locally using parts shipped by MMC from Japan for assembly overseas (excludes Knocked Down production).

*1 GACCF was reestablished as GMMC, which started operations in September 2012.

*2 Vehicle production contract with HHMC (China) was terminated in 2010.

Sales Volume by Country

(Unit: Vehicles)

Country/Area	2009	2010	2011	2012	2013
Thailand.....	23,397	47,513	73,649	141,923	85,199
Philippines.....	24,973	32,922	32,185	36,064	44,272
Indonesia.....	36,127	59,081	73,254	87,030	93,362
Malaysia (Conventional counting)	11,326	17,336	—	—	—
Malaysia (New counting) * ¹	—	12,204	11,408	12,619	12,572
Taiwan (Conventional counting)	42,515	46,566	—	—	—
Taiwan (New counting) * ¹	—	36,269	36,271	28,801	28,404
China (Conventional counting)	143,030	167,989	—	—	—
China (New counting) * ¹	—	65,001	62,541	42,019	71,317
Hong Kong.....	373	398	297	292	736
Republic of Korea.....	621	410	14	122	107
India	2,478	3,174	2,463	2,086	1,521
Sri Lanka	236	543	2,440	2,410	1,308
Bangladesh.....	1,170	1,800	1,826	1,272	1,223
Vietnam.....	2,202	2,333	1,471	1,273	1,840
Singapore.....	2,200	754	264	98	72
Brunei Darussalam.....	878	985	941	1,021	1,317
Cambodia.....	158	203	277	227	184
Laos.....	139	203	91	133	271
Pakistan	71	65	144	1	2
Bhutan.....	—	19	45	16	—
Nepal.....	—	30	6	31	47
Myanmar.....	—	—	2	—	2
Total (Conventional counting)	291,894	382,324	—	—	—
Total (New counting) *¹	—	263,907	299,589	357,438	343,756

*1 The new method of counting the number of units sold (the retail sales volume) was adopted, effective FY2011: Conventionally, the sales volume included products designed by MMC which were sold under other companies' brands and MMC earned royalty income on, but under the new counting method, only MMC branded products are counted in the sales volume.

Thailand

Production Volume by Model

(Unit: Vehicles)

Production Facility / Assembler	Model	2009	2010	2011	2012	2013
■ MMTh (Thailand)	Triton.....	87,008	135,895	147,542	185,670	143,947
	Pajero Sport.....	37,179	55,289	67,966	82,712	49,438
	Grandis (Space Wagon).....	1,880	1,774	179	—	—
	Galant Fortis (Lancer EX).....	—	567	3,175	2,320	990
	Lancer.....	3,396	6,235	2,568	575	—
	Mirage.....	—	—	20	122,633	97,938
	Attrage.....	—	—	—	—	47,006
Total		129,463	199,760	221,450	393,910	339,319

■ MMC and Consolidated Subsidiaries

Note: () in the model column indicates the local name of each model.

Production volume indicates number of vehicles produced locally using parts shipped by MMC from Japan for assembly overseas (excludes Knocked Down production).

Sales Volume by Model

(Unit: Vehicles)

Production Facility / Assembler	Model	2009	2010	2011	2012	2013
■ MMTh (Thailand)	Triton.....	10,659	26,779	47,319	59,491	35,749
	Pajero Sport.....	7,280	12,462	20,008	25,315	13,919
	Grandis (Space Wagon).....	1,306	1,247	513	1	—
	Galant Fortis (Lancer EX).....	1,702	2,660	3,098	2,529	730
	Lancer.....	2,447	4,365	2,710	782	37
	Mirage.....	—	—	—	53,801	18,015
	Attrage.....	—	—	—	—	16,744
■ Japan	Pajero.....	3	—	1	—	—
	i-MiEV.....	—	—	—	4	5
Total		23,397	47,513	73,649	141,923	85,199
Total Market Volume		589,337	847,173	807,423	1,510,436	1,083,565

■ MMC and Consolidated Subsidiaries

Note: () in the model column indicates the local name of each model.

Philippines

Production Volume by Model

(Unit: Vehicles)

Production Facility / Assembler	Model	2009	2010	2011	2012	2013
■ MMPC (Philippines)	Adventure.....	5,986	7,390	6,712	6,062	7,154
	Delica (L300).....	4,642	6,891	6,448	6,467	7,330
Total		10,628	14,281	13,160	12,529	14,484

■ MMC and Consolidated Subsidiaries

Note: Production volume indicates number of vehicles produced locally using parts shipped by MMC from Japan for assembly overseas (excludes Knocked Down production).

Sales Volume by Model

(Unit: Vehicles)

Production Facility / Assembler	Model	2009	2010	2011	2012	2013
■ MMPC (Philippines)	Adventure.....	5,738	7,039	6,680	6,341	6,599
	Delica (L300).....	4,310	6,288	6,595	6,887	7,206
■ Japan	Pajero.....	75	259	464	504	433
	Outlander.....	95	2	—	—	—
	New Model Outlander PHEV.....	—	—	—	—	1
	Galant Fortis (Lancer EX)*1.....	6	—	1	1	—
	RVR (ASX).....	—	421	400	168	113
	i-MiEV.....	—	—	—	—	1
	Others.....	6	3	—	—	—
■ MMNA (U.S.A)	Endeavor.....	4	—	—	—	—
	Others.....	6	3	—	—	—
■ MMTh (Thailand)	Triton (Strada).....	2,986	3,963	4,688	3,969	3,655
	Pajero Sport.....	9,612	12,393	11,560	13,010	15,671
	Grandis.....	102	72	72	—	—
	Galant Fortis (Lancer EX).....	411	1,013	686	1,332	1,368
	Lancer.....	1,200	1,183	811	196	1
	Mirage.....	—	—	—	3,538	5,595
	Mirage G4.....	—	—	—	—	3,556
CMC (Taiwan)	Galant.....	79	23	25	3	—
	Zinger (Fuzion).....	349	263	203	115	73
Total		24,973	32,922	32,185	36,064	44,272
Total Market Volume		139,768	170,062	161,039	187,801	216,712

■ MMC and Consolidated Subsidiaries

Note: () in the model column indicates the local name of each model.

*1 Including Lancer Evolution

Indonesia

Production Volume by Model

(Unit: Vehicles)

Production Facility / Assembler	Model	2009	2010	2011	2012	2013
KRM (Indonesia)	Colt T120SS.....	9,744	19,392	26,225	31,473	33,746
	Colt L300	15,000	24,600	29,549	29,667	29,440
	RVR (Outlander Sport).....	—	—	—	6,510	4,770
Total		24,744	43,992	55,774	61,140	67,956

Note: Production volume indicates number of vehicles produced locally using parts shipped by MMC from Japan for assembly overseas (excludes Knocked Down production).

Sales Volume by Model

(Unit: Vehicles)

Production Facility / Assembler	Model	2009	2010	2011	2012	2013
KRM (Indonesia)	Colt T120SS.....	9,720	18,568	23,698	28,979	29,374
	Colt L300	14,884	22,658	27,881	29,395	29,353
	RVR (ASX)	—	—	—	4,915	5,127
Japan	Galant Fortis (Lancer)*1	95	72	52	13	3
	Pajero.....	10	8	5	3	2
	i-MiEV	—	—	—	—	1
MMTh (Thailand)	Lancer	21	56	39	54	181
	Grandis (Space Wagon)	214	245	301	59	4
	Triton.....	4,615	6,501	8,061	6,993	8,913
	Pajero Sport.....	6,299	10,780	13,197	13,322	13,530
	Mirage	—	—	—	3,297	6,874
OEM Supplied by Suzuki	Maven.....	269	191	18	—	—
	Others	—	2	2	—	—
Total		36,127	59,081	73,254	87,030	93,362
Total Market Volume		488,010	688,968	794,442	983,100	1,097,622

■ MMC and Consolidated Subsidiaries

Note: () in the model column indicates the local name of each model.

*1 Including Lancer Evolution

Malaysia

Production Volume by Model

(Unit: Vehicles)

Production Facility / Assembler	Model	2009	2010	2011	2012	2013
PROTON (Malaysia)	★ Inspira and others*1	1,562	393	—	—	—
Total		1,562	393	—	—	—

★ Non-Mitsubishi brand vehicles

Note: Production volume indicates number of vehicles produced locally using parts shipped by MMC from Japan for assembly overseas (excludes Knocked Down production).

*1 Inspira / Iswara / Satria / Putra / Arena / Wira / Waja / Juara / Perdana

Sales Volume by Model

(Unit: Vehicles)

Production Facility / Assembler	Model	2009	2010	2011	2012	2013
PROTON (Malaysia)	★ Inspira and others*1	2,893	5,132	—	—	—
Japan	RVR (ASX)	—	475	933	857	1,069
	Galant Fortis (Lancer)*2	1,279	1,349	786	581	389
	Pajero	—	39	46	25	14
	Others.....	—	—	2	1	7
MMTh (Thailand)	Triton.....	5,844	8,027	7,754	8,207	6,941
	Pajero Sport.....	694	1,564	1,445	1,210	899
	Grandis (Space Wagon).....	616	750	442	105	1
	Mirage.....	—	—	—	1,633	2,052
	Attrage	—	—	—	—	1,200
Total (Conventional counting)		11,326	17,336	—	—	—
Total (New counting)*3		—	12,204	11,408	12,619	12,572
Total Market Volume		547,785	598,776	562,468	627,187	636,910

■ MMC and Consolidated Subsidiaries

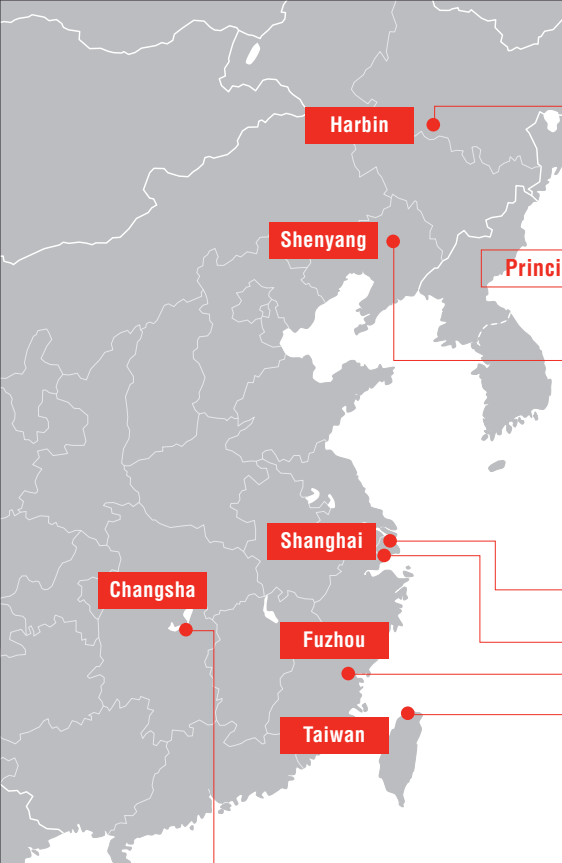
★ Non-Mitsubishi brand vehicles

Note: () in the model column indicates the local name of each model.

*1 Inspira / Iswara / Satria / Putra / Arena / Wira / Waja / Juara / Perdana

*2 Including Lancer Evolution and Sportback

*3 The new method of counting the number of units sold (the retail sales volume) was adopted, effective FY2011: Conventionally, the sales volume included products designed by MMC which were sold under other companies' brands and MMC earned royalty income on, but under the new counting method, only MMC branded products are counted in the sales volume.



Principal Operational Facilities in China

DAE

Harbin Dongan Automotive Engine Manufacturing Co., Ltd.

Capitalization: CNY 500 million

Activities: Manufacturing and sales of engines and transmissions

Shareholders: MMC 15.3%, MCIC 9.0%, MC 5.7%

SAME

Shenyang Aerospace Mitsubishi Motors Engine Manufacturing Co., Ltd.

Capitalization: CNY 740 million

Activities: Manufacturing and sales of engines

Shareholders: MMC 25.0%, MCIC 14.7%, MC 9.3%

MMCh

Mitsubishi Motors (China) Co., Ltd.

Capitalization: 30 million RMB

Activities: Research and investigation and quality control about automobile Purchasing and procurement of automobile parts

Shareholders: MMC 100.0%

MMSCN

Mitsubishi Motor Sales (China) Co., Ltd.

Capitalization: JPY 3 billion

Activities: Automobile importing and sales

Shareholders: MMC 50.0%, MC 50.0%

SEM

South East (Fujian) Motor Co., Ltd.

Capitalization: USD 138 million

Activities: Automobile manufacturing and sales

Shareholders: MMC 25.0%, CMC 25.0%

CMC

China Motor Co., Ltd.

Capitalization: TWD 13.8 billion

Activities: Automobile manufacturing and sales

Shareholders: MMC 14.0%, MC 4.8%

GMMC

GAC Mitsubishi Motors Co., Ltd

Capitalization: CNY 1.7 billion

Activities: Automobile manufacturing and sales

Shareholders: MMC 33.0%, MC 17.0%

(As of March 31, 2014)

China

Production Volume by Model

(Unit: Vehicles)

Production Facility / Assembler	Model	2009	2010	2011	2012*1	2013
SEM (China)	★ Freeca	503	484	—	—	—
	★ Delica	3,824	5,367	4,040	—	—
	Galant Fortis (Lancer)	16,672	20,442	22,565	16,061	12,609
	Lancer	80,563	4,552	3,213	2,797	4,497
	★ Lioncel / V3	—	70,625	71,762	—	—
	Galant	4,081	1,718	564	222	152
	★ Veryca	—	8,498	2,023	—	—
	Zinger	2,525	1,686	1,391	874	861
	★ Pajero iO (Liebao Feiteng)	2,716	2,108	2,250	—	—
	★ Mirage Dingo (Saima)	5,126	1,083	—	—	—
Total		116,010	116,563	107,808	19,954	18,119
GMMC (China)*2	★ Pajero	—	—	—	2,411	—
HHMC (China)*3	RVR (ASX)	—	—	—	8,201	41,484
	Pajero Sport	—	—	—	—	5,783
Total		—	—	—	10,612	47,267

★ Non-Mitsubishi brand vehicles

() in the model column indicates the local name of each model.

Note: Production volume indicates number of vehicles produced locally using parts shipped by MMC from Japan for assembly overseas (excludes Knocked Down production).

*1 Locally branded models produced in China, which had been included in the output figures for China, have been excluded from the statistic since FY2012.

*2 GACCF was reestablished as GMMC, which started operations in September 2012.

*3 Vehicle production contract with HHMC (China) was terminated in 2010.

*4 Included as production in Japan according to the definition by Japan Automobile Manufacturers Association, Inc. (JAMA)

The sales volume by model in China is shown on the following page.

Sales Volume by Model

(Unit: Vehicles)

Production Facility / Assembler	Model	2009	2010	2011	2012	2013
GACCF (China)*1	Pajero	8,381	9,259	6,972	2,797	—
	★ Pajero (Liebao)	16,332	20,232	—	—	—
	★ Pajero iO (Liebao Feiteng)	2,889	2,375	—	—	—
GMMC (China)	Pajero	—	—	—	2,237	3,539
	RVR (ASX)	—	—	—	4,607	32,473
	Pajero Sport	—	—	—	—	1,973
SEM (China)	★ Freeca	652	490	—	—	—
	★ Delica	4,352	5,264	—	—	—
	Zinger	2,830	1,723	1,681	1,038	855
	★ Veryca	20	3,214	—	—	—
	Chariot Grandis (Soveran)	28	—	—	—	—
	Galant	3,747	1,878	935	365	188
	Galant Fortis (Lancer)	11,665	21,923	25,333	16,610	11,228
	Lancer (Lancer EX)	9,551	4,670	3,794	2,944	3,904
HHMC (China)	★ Lioncel / V3	62,797	70,121	—	—	—
	★ Mirage Dingo (Saima)	5,383	1,292	—	—	—
■ Japan	Pajero	2,366	5,461	4,514	2,064	4,501
	Grandis	1,295	905	403	37	2
	New Model Outlander	—	—	—	1,488	11,436
	Outlander (Outlander EX)	10,156	12,236	9,553	3,779	74
	Galant Fortis (Lancer EX)*2	376	110	56	26	13
	RVR (ASX)	—	6,796	8,365	2,533	9
■ MMNA (U.S.)	Eclipse Spyder	210	40	14	—	—
■ MMTh (Thailand)	Pajero Sport	—	—	921	1,494	1,122
Total (Conventional counting)		143,030	167,989	—	—	—
Total (New counting)*3		—	65,001	62,541	42,019	71,317
Total Market Volume		11,849,005	14,068,770	14,427,923	16,142,816	18,374,181

■ MMC and Consolidated Subsidiaries / ★ Non-Mitsubishi brand vehicles / Note: () in the model column indicates the local name of each model. / *1 GACCF was reestablished as GMMC, which started operations in September 2012. / *2 Including Lancer Evolution / *3 The new method of counting the number of units sold (the retail sales volume) was adopted, effective FY2011: Conventionally, the sales volume included products designed by MMC which were sold under other companies' brands and MMC earned royalty income on, but under the new counting method, only MMC branded products are counted in the sales volume.

Taiwan

Production Volume by Model

(Unit: Vehicles)

Production Facility / Assembler	Model	2009	2010	2011	2012	2013
CMC (Taiwan)	Freeca / Zinger	4,049	4,902	4,140	4,508	4,046
	★ Veryca	11,866	10,259	10,937	8,416	10,098
	Delica	1,649	1,946	2,467	2,560	2,470
	Delica Truck	2,501	3,919	4,087	3,909	4,884
	Chariot Grandis (Savrin)	1,371	1,455	1,331	1,034	475
	Outlander	5,687	6,916	7,107	4,731	3,570
	Galant	844	615	610	454	202
	Galant Fortis (Lancer)	8,168	8,185	8,045	5,911	3,966
	Colt Plus	9,000	8,575	9,204	6,143	7,385
	Total	45,135	46,772	47,928	37,666	37,096

★ Non-Mitsubishi brand vehicles / Note: () in the model column indicates the local name of each model. / Production volume indicates number of vehicles produced locally using parts shipped by MMC from Japan for assembly overseas (excludes Knocked Down production).

Sales Volume by Model

(Unit: Vehicles)

Production Facility / Assembler	Model	2009	2010	2011	2012	2013
CMC (Taiwan)	Zinger	3,502	4,564	4,323	4,280	4,375
	★ Veryca	10,866	10,297	—	—	—
	Delica	1,485	2,097	2,450	2,447	2,370
	Delica Truck	2,497	3,819	3,961	3,883	4,598
	Chariot Grandis (Savrin)	1,373	1,505	1,310	968	659
	Outlander	5,541	6,989	6,861	4,566	4,049
	Galant	720	672	578	552	219
	Galant Fortis (Lancer)	7,942	8,057	7,945	5,649	5,002
	Colt Plus	8,573	8,566	8,816	6,383	7,096
	Total	42,515	46,566	—	—	—
■ Japan	Pajero	15	—	—	9	25
	RVR (ASX)	—	—	27	64	6
	Others	1	—	—	—	5
	Total (Conventional counting)	—	36,269	36,271	28,801	28,404
Total (New counting)*1		—	36,269	36,271	28,801	28,404
Total Market Volume		291,811	347,817	348,142	339,159	371,199

■ MMC and Consolidated Subsidiaries / ★ Non-Mitsubishi brand vehicles / Note: () in the model column indicates the local name of each model. / *1 The new method of counting the number of units sold (the retail sales volume) was adopted, effective FY2011: Conventionally, the sales volume included products designed by MMC which were sold under other companies' brands and MMC earned royalty income on, but under the new counting method, only MMC branded products are counted in the sales volume.

Oceania

Sales Volume by Model

(Unit: Vehicles)

Production Facility / Assembler	Model	2009	2010	2011	2012	2013
■ MMAL (Australia)	380* ¹	7	—	—	—	—
■ Japan	Grandis.....	221	137	—	—	—
	Colt.....	1,877	1,544	1,420	423	—
	RVR (ASX).....	—	4,253	7,787	6,755	8,649
	i.....	34	9	—	—	—
	i-MiEV.....	2	118	53	96	—
	L300 Delica (Express).....	2,298	1,635	1,410	1,473	894
	Galant Fortis (Lancer)* ²	23,013	22,811	19,156	13,973	12,777
	Lancer* ³	244	—	—	—	—
	Outlander.....	8,827	9,538	8,760	5,446	8
	New Model Outlander.....	—	—	—	3,371	10,521
	New Model Outlander PHEV.....	—	—	—	—	69
	Pajero.....	6,088	6,949	7,256	6,240	6,382
	Others.....	1	—	—	—	—
■ MMTh (Thailand)	Triton.....	18,534	18,278	18,017	21,078	24,462
	Pajero Sport (Challenger).....	824	2,431	2,615	2,610	1,947
	Mirage.....	—	—	—	2,562	10,914
Total		61,970	67,703	66,474	64,027	76,623
Total Market Volume		1,016,747	1,085,049	1,074,782	1,193,400	1,211,135

■ MMC and Consolidated Subsidiaries / Figures in Oceania refer to the sum of those in Australia and New Zealand. / () in the model column indicates the local name of each model. / *¹ Model produced at MMAL where production was terminated in 2008. Its production volume in 2008 is 91 units. / *² Including Lancer Evolution and Sportback / *³ Including Lancer Wagon

Middle East & Africa

Production Volume by Model

(Unit: Vehicles)

Production Facility / Assembler	Model	2009	2010	2011	2012	2013
MBSA (South Africa)	L200 Strada / Triton.....	1,452	1,703	321	—	—
SLM (Tunisia)	L200 Strada (L200).....	2,446	2,524	1,690	—	1,920
Total		3,898	4,227	2,011	—	1,920

MBSA: Mercedes-Benz South Africa (Pty) Ltd. / SLM: Societe Le Moteur S.A.

Note: Production volume indicates number of vehicles produced locally using parts shipped by MMC from Japan for assembly overseas (excludes Knocked Down production).

Sales Volume by Model

(Unit: Vehicles)

Production Facility / Assembler	Model	2009	2010	2011	2012	2013
■ Japan	Pajero* ²	18,188	18,266	12,699	12,535	18,113
	Challenger.....	1,737	1,596	787	105	18
	L300 Delica.....	2,469	3,498	2,194	2,600	2,983
	Grandis.....	579	375	129	14	—
	Outlander.....	3,003	2,174	1,888	1,353	1,103
	New Model Outlander.....	—	—	—	—	886
	RVR (ASX).....	—	505	1,672	3,457	5,131
	Galant / Legnum.....	6	5	12	—	—
	Galant Fortis (Lancer)* ¹	8,920	4,957	4,391	3,647	10,707
	Lancer.....	34,377	28,697	12,361	16,298	16,098
	Airtrek.....	19	—	—	—	—
	Others.....	—	10	4	3	—
■ MMNA (U.S.A.)	Galant.....	3,095	4,513	2,847	2,507	1,134
	Eclipse Spyder.....	247	255	139	12	—
■ NedCar (Netherlands)	Colt.....	16	47	67	1	—
■ MMTh (Thailand)	Triton (L200)* ²	31,772	24,502	22,170	25,311	20,850
	Strada (L200)* ²	2,719	2,220	2,067	627	—
	Pajero Sport.....	1,559	2,458	2,462	2,384	2,596
	Mirage.....	—	—	—	—	1,215
	Attrage.....	—	—	—	—	598
	Others.....	—	3	1	—	—
Total		108,706	94,081	65,890	70,854	81,432

■ MMC and Consolidated Subsidiaries

Note: () in the model column indicates the local name of each model. / *¹ Including production at African production base / *² Including Lancer Evolution and Sportback

Central & South America

Production Volume by Model

(Unit: Vehicles)

Production Facility / Assembler	Model	2009	2010	2011	2012	2013
MMCB (Brazil)	Triton (L200 Triton).....	10,530	12,090	17,610	23,490	18,660
	L200 Strada (L200 Outdoor)	9,900	11,130	6,300	—	—
	Pajero Sport (Pajero Dakar)	—	1,260	6,000	6,240	3,600
	Challenger (Pajero Sport).....	4,560	1,380	—	—	—
	Pajero iO (Pajero TR4).....	10,440	10,110	10,380	10,530	9,060
MAV (Venezuela)	Pajero Sport (Montero Sport)	—	—	—	—	596
Total		35,430	35,970	40,290	40,260	31,916

MMCB: MMC Automotores do Brasil Ltda. / MAV: MMC Automotriz S.A.

Note: Production volume indicates number of vehicles produced locally using parts shipped by MMC from Japan for assembly overseas (excludes Knocked Down production).

() in the model column indicates the local name of each model.

Sales Volume by Model

(Unit: Vehicles)

Production Facility / Assembler	Model	2009	2010	2011	2012	2013
■ Japan	MMCB (Brazil)					
	Triton (L200 Triton).....	8,851	10,266	12,609	21,058	21,512
	L200 Strada (L200 Outdoor)	10,621	10,533	9,587	227	11
	Pajero Sport (Pajero Dakar)	1,659	2,954	4,442	5,910	4,711
	Challenger (Pajero Sport).....	3,790	3,410	359	9	6
	Pajero iO (Pajero TR4).....	8,483	11,466	9,158	10,667	9,674
	Pajero (Montero).....	3,855	3,747	3,638	2,703	2,808
	Challenger (Montero Sport / Nativia).....	1,207	794	143	1	—
	Delica (L300)	2,392	3,191	2,602	2,478	3,610
	Grandis.....	25	10	4	—	—
	Outlander	6,547	7,107	6,769	5,353	2,410
	New Model Outlander	—	—	—	—	5,327
	Galant Fortis (Lancer EX)*1	7,876	7,854	7,308	12,207	8,372
	Lancer*2.....	3,891	4,945	5,960	6,564	7,531
	Airtrek (Outlander).....	217	76	—	—	—
■ MMNA (U.S.A.)	RVR (ASX)*3.....	—	5,362	16,413	14,343	14,545
	i-MiEV	—	—	11	41	9
	Others	19	—	—	—	—
	Endeavor.....	284	275	135	56	1
	Galant.....	95	24	17	—	—
■ MMTh (Thailand)	Eclipse / Eclipse Spyder.....	174	103	57	40	3
	Triton (L200 Triton).....	7,586	11,102	12,113	11,999	15,111
	L200 Strada (L200 Outdoor)	695	—	82	3	—
	Pajero Sport (Pajero Dakar)	1,203	1,929	1,924	1,748	3,091
	Mirage	—	—	—	—	4,623
Attrage		—	—	—	—	65
合計		69,470	85,148	93,328	95,407	103,420

■ MMC and Consolidated Subsidiaries

Note: () in the model column indicates the local name of each model.

*1 Including Lancer Evolution and Sportback

*2 Including Lancer Evolution

*3 Including production at MMNA since FY2012.

Brazil

Sales Volume by Model

(Unit: Vehicles)

Production Facility / Assembler	Model	2009	2010	2011	2012	2013
■ Japan	MMCB (Brazil)					
	Triton (L200 Triton).....	8,851	10,266	12,609	21,058	21,512
	L200 Strada (L200 Outdoor)	10,621	10,533	9,587	227	11
	Pajero Sport (Pajero Dakar)	1,659	2,954	4,442	5,910	4,711
	Challenger (L200 Sport).....	3,790	3,410	359	9	2
	Pajero iO (Pajero TR4).....	8,483	11,466	9,158	10,667	9,674
	Pajero.....	2,033	2,105	2,149	1,688	1,822
	Grandis.....	4	5	—	—	—
	Outlander	2,480	3,218	4,860	3,917	1,279
	New Model Outlander	—	—	—	—	3,979
	Galant Fortis (Lancer EX)*1	5	58	1,754	7,365	4,966
	Airtrek (Outlander).....	31	1	—	—	—
	RVR (ASX)	—	2,360	11,150	10,279	11,281
	Others	—	—	—	4	—
	Eclipse / Eclipse Spyder.....	33	6	—	—	1
Total		37,990	46,382	56,068	61,124	59,238
Total Market Volume		3,117,166	3,356,222	3,420,633	3,650,017	3,562,910

■ MMC and Consolidated Subsidiaries

() in the model column indicates the local name of each model.

*1 Including Lancer Evolution and Sportback

Members of the Board and Executive Officers

As of June 25, 2014

<div> <div>Members of the Board</div> <div>* Representative Director</div> </div>				
 <p>Osamu Masuko * Chairman of the Board, CEO</p>	 <p>Tetsuro Aikawa * President, COO</p>	 <p>Hiroshi Harunari * Executive Vice President In Charge of Overseas Operations Group Headquarters A In Charge of Overseas Operations Group Headquarters B In Charge of Global After Sales Group Headquarters</p>	 <p>Ryugo Nakao * Executive Vice President In Charge of Product Projects & Strategy In Charge of Development</p>	 <p>Gayu Uesugi Executive Vice President Chairman of the Board, CEO- Mitsubishi Motors North America Inc.</p>
 <p>Shuichi Aoto Managing Director Chief Business Ethics Officer Head Officer of the Headquarters CSR, Corporate Affairs, Controlling & Accounting Group Headquarters In Charge of Procurement</p>	 <p>Yutaka Tabata Managing Director Head Officer of the Headquarters Corporate Planning & Finance Group Headquarters</p>	 <p>Toshihiko Hattori Head Officer of the Headquarters Domestic Sales Group Headquarters</p>	 <p>Seiji Izumisawa Head Officer of the Headquarters Quality Affairs Group Headquarters</p>	 <p>Takeshi Ando Head Officer of the Headquarters Production Group Headquarters</p>
 <p>Mikio Sasaki Non-Executive Director</p>	 <p>Harumi Sakamoto Non-Executive Director</p>	 <p>Syunichi Miyanaga Non-Executive Director</p>	 <p>Takeshi Niinami Non-Executive Director</p>	
Statutory Auditors				
<p>Hideo Kimura Statutory Auditor (Full-time)</p>	<p>Takitaro Fukuda Statutory Auditor (Full-time)</p>	<p>Tatsuhiko Nojima Statutory Auditor (Outside Statutory Auditor)</p>	<p>Katsunori Nagayasu Statutory Auditor (Outside Statutory Auditor)</p>	<p>Toshimitsu Iwanami Statutory Auditor (Outside Statutory Auditor)</p>
Senior Executive Officer				
<p>Yoshihiro Kuroi Corporate General Manager of Corporate Planning Office</p>	<p>Yoshikazu Nakamura Chief Environmental Strategy Officer Corporate General Manager of CSR Promotion Office</p>	<p>Masao Omichi Corporate General Manager of Corporate Affairs Office</p>	<p>Hiroshi Noda Corporate General Manager of Controlling & Accounting Office</p>	<p>Tetsuya Tamechika Head Officer of the Headquarters Product Projects & Strategy Group Headquarters</p>
<p>Kanenori Okamoto Product Executive (C&D-Seg) Corporate General Manager of EV Business Office</p>	<p>Takashi Sato Head Officer of the Headquarters Development Group Headquarters</p>	<p>Jo Tsuji Head Officer of the Headquarters Overseas Operations Group Headquarters A</p>	<p>Morikazu Chokki Head Officer of the Headquarters Overseas Operations Group Headquarters B Corporate General Manager of Thai Business Office</p>	
Executive Officer				
<p>Hitoshi Inada Assistant to Head Officer of the Headquarters Corporate Planning & Finance Group Headquarters Vice Corporate General Manager of Corporate Planning Office</p>	<p>Yoichi Yokozawa Vice Corporate General Manager of Corporate Planning Office</p>	<p>Nobuaki Yonezawa Corporate General Manager of Finance Office</p>	<p>Tsunehiro Kunimoto Corporate General Manager of Design Office</p>	<p>Yukihiro Hattori Head Officer of the Headquarters Procurement Group Headquarters</p>
<p>Fumitaka Tomono Plant General Manager of Powertrain Plant</p>	<p>Koji Yokomaku Corporate General Manager of Quality Affairs Office</p>	<p>Ryuichi Hasuo Corporate General Manager of Domestic Sales Office</p>	<p>Yoichiro Yatabe Head Officer of the Headquarters Global After Sales Group Headquarters</p>	<p>Tomonori Tanaka Corporate General Manager of After Sales Office</p>
<p>Eiichi Kataoka Corporate General Manager of Overseas Business Management Office</p>	<p>Kenichi Horinouchi Corporate General Manager of Asia & ASEAN Office</p>	<p>Tomoharu Ikeda Corporate General Manager of Oceania & Latin America Office</p>	<p>Tohru Hashimoto Deputy President & COO - NMKV Co., Ltd.</p>	<p>Daisuke Tatsumi President - GAC Mitsubishi Motors Co., Ltd.</p>
<p>Masahiko Ueki President, CEO- Mitsubishi Motors (Thailand) Co., Ltd.</p>	<p>Mitsunori Kitao Executive Vice President, COO&CQO Mitsubishi Motors (Thailand) Co., Ltd.</p>			

Company History

Mitsubishi Motors Corporation (MMC) was established as a wholly-owned subsidiary of Mitsubishi Heavy Industries, Ltd. (MHI) on April 22, 1970. MMC began operating on June 1, 1970 when MHI's automotive division was formally transferred to it.

Year	Chairmen & Presidents	Major Milestones
1970	Jan. 31 Yuji Sato [P:MMSC] Apr. 22 Yuji Sato [P:MMC]	Apr. Mitsubishi Motors Corporation incorporated as wholly-owned subsidiary of MHI. Jun. MMC started business taking over MHI motor vehicle division operations. MHI's Kyoto Works (certain facilities), Nagoya Motor Vehicle Works, Kawasaki Motor Vehicle Works (renamed "Tokyo Motor Vehicle Works" in the same month) and Mizushima Motor Vehicle Works transferred from MHI to MMC.
1972		Jan. Mitsubishi Rented Car, Inc. established in joint-venture between Mitsubishi Corporation, Mitsubishi Motor Sales Co. (MMSC, established through merger of Mitsubishi Fuso Motors and Shin Mitsubishi Motor Sales Co. in October 1964) and Avis Rent A car System, Inc. (Renamed "Mitsubishi Auto Lease Co.,Ltd." in October 1984 and "Mitsubishi Auto Credit-Lease Corporation" in July 1988).
1973	May 30 Tomio Kubo [P:MMC]	
1974	Nov. 29 Tomio Kubo [P:MMSC]	
1976	Jan. 15 Tomio Kubo [C:MMSC] Jan. 15 Eiji Yokoyama [P:MMSC]	
1977		Aug. MMC commissioned Nagoya Motor Vehicle Works—Okazaki Plant.
1979	Jun. 29 Tomio Kubo [C:MMC] Jun. 29 Yoshitoshi Sone [P:MMC]	Dec. MMC commissioned Kyoto Works—Shiga Plant.
1980		Oct. MMC and Mitsubishi Corporation jointly established Mitsubishi Motors Australia Ltd. (MMC subsequently acquired all MMAL shares in December 2001, MMAL is currently a consolidated subsidiary of MMC).
1981	Jun. 29 Eiji Yokoyama [C:MMSC] Jun. 29 Masao Suzuki [P:MMSC] Jun. 30 Teruo Tojo [P:MMC]	Dec. MMC and Mitsubishi Corporation jointly established Mitsubishi Motors Sales of America, Inc.
1983	Jun. 29 Masao Suzuki [C:MMSC] Jun. 29 Toshiharu Tanaka [P:MMSC] Jun. 30 Teruo Tojo [C:MMC] Jun. 30 Toyoo Tate [P:MMC]	
1984	Oct. 1 Toshiharu Tanaka [C:MMC]	Oct. MMC took over management of Mitsubishi Motor Sales Co., Ltd. and renamed it "Ryoji Corporation."
1985	Jun. 27 Yoshisada Okano [C:MMC]	Oct. MMC established Diamond-Star Motors Corporation (DSM) in a joint-venture agreement with Chrysler Corporation.
1988		Dec. MMC shares listed on First Section of Tokyo, Osaka and Nagoya stock exchanges.
1989	Jun. 29 Toyoo Tate [C:MMC] Jun. 29 Hirokazu Nakamura [P:MMC]	Mar. MMC shares listed on Kyoto, Hiroshima, Niigata, Fukuoka and Sapporo stock exchanges.
1991		Oct. MMC purchased all Chrysler-owned shares in Diamond-Star Motors (DSM). Nov. MMC acquired 33.3% stock (15% stake held by MMC affiliates included) of Volvo Car B.V. (renamed "Netherlands Car B.V." in January 1992) under terms of shareholders' agreement (signed in August 1991) with the Netherlands Government and Volvo Car Corp. relating to joint-venture production of passenger cars in the Netherlands.
1993		Mar. MMC established Mitsubishi Motor Sales Europe B.V.
1995	Jun. 29 Hirokazu Nakamura [C:MMC] Jun. 29 Nobuhisa Tsukahara [P:MMC]	Jul. DSM renamed "Mitsubishi Motor Manufacturing of America, Inc."
1996	Jun. 27 Takemune Kimura [P:MMC]	Nov. MMC commissioned Tokachi Proving Ground in Hokkaido.
1997	Nov. 27 Takemune Kimura [C:MMC] Nov. 27 Katsuhiko Kawasoe [P:MMC]	
1999		Feb. MMC acquired half of the Dutch government's 16.7% holding in Netherlands Car B.V., bringing its equity interest up to 50% (15% stake held by MMC affiliates included). Jun. Nagoya Motor Vehicle Works, Mizushima Motor Vehicle Works and Tokyo Motor Vehicle Works renamed "Nagoya Plant," "Mizushima Plant" and "Tokyo Plant," respectively. Dec. MMC and AB Volvo signed strategic operational alliance covering trucks and buses.

Year		Chairmen & Presidents	Major Milestones
2000	Nov. 1	Takashi Sonobe [P:MMC]	Jul. MMC signed Master Alliance Agreement with DaimlerChrysler AG covering passenger car operations.
2001			Mar. MMC acquired AB Volvo's 50% stake in Netherlands Car B.V., thereby increasing its equity interest to 100% (15% stake held by MMC affiliates included. Netherlands Car B.V. is currently an MMC subsidiary).
			Apr. MMC replaced AB Volvo with DaimlerChrysler as its strategic alliance partner in truck & bus sector.
2002	Jun. 25	Takashi Sonobe [C:MMC]	Mar. MMC entered agreement with Nissan Motor Co.,Ltd. and JATCO TransTechnology Ltd. (JTT, renamed "JATCO Ltd." in April 2002) to integrate MMC and JTT automatic and CV transmission operations.
	Jun. 25	Rolf Eckrodt [P:MMC]	Apr. MMC spun off AT and CVT operations into a separate company, incorporating them as Diamondmatic Co., Ltd. Following this, MMC transfers its Kyoto Plant-Yagi facilities to Diamondmatic Co., Ltd.
			Jul. MMC exchanged all shares held in Diamondmatic Co., Ltd. with JATCO Ltd., giving MMC an 18% share in JATCO.
			Sep. MMC agreed to spin off its truck and bus operations and subsequently sold shares in the new company to DaimlerChrysler AG.
			Oct. MMC signed agreement with 10 Mitsubishi group firms concerning the spin-off of truck and bus operations and sale of shares in the new company.
			Dec. Mitsubishi Motors Sales Europe B.V. merged with Mitsubishi Motors Europe B.V. (presently a consolidated subsidiary).
2003			Jan. Mitsubishi Motor Sales of America, Inc., Mitsubishi Motor Manufacturing of America, Inc. and one other company merged to form Mitsubishi Motors North America, Inc. (presently a consolidated subsidiary).
			Jan. MMC truck and bus operations are spun off under Japan's corporate separation law and established as Mitsubishi Fuso Truck and Bus Corporation (MFTBC). Accompanying this move, the Truck & Bus Production Office (Kawasaki Plant) was transferred to MFTBC and all shares of Mitsubishi Fuso Truck of America, Inc. were succeeded to by MFTBC.
			Mar. MMC sold a 43% stake in MFTBC to DaimlerChrysler AG and a collective 15% stake to 10 Mitsubishi group firms, leaving it with a shareholding of 42% in MFTBC.
			May MMC moved its head office to 16-4, Konan 2-chome, Minato-ku, Tokyo.
			Jun. MMC renamed Kyoto Plant "Powertrain Plant."
2004	Apr. 30	Yoichiro Okazaki [C,P:MMC]	Mar. MMC sold 22% stake in MFTBC to DaimlerChrysler AG, leaving it with a shareholding of 20% in MFTBC.
	Jun. 29	Hideyasu Tagaya [P:MMC]	
2005	Jan. 28	Takashi Nishioka [C:MMC]	Mar. MMC transferred a 20% stake in MFTBC to DaimlerChrysler AG in Germany, leaving no shareholding in MFTBC.
	Jan. 28	Osamu Masuko [P:MMC]	
2006			Mar. Mitsubishi Corporation and Diamond Lease Co., Ltd. signed a basic agreement to reorganize Mitsubishi Auto Credit-Lease Corporation and Diamond Auto Lease Co., Ltd.
2007			Jan. MMC moved its head office to 33-8, Shiba 5-chome, Minato-ku, Tokyo.
2008			Mar. Car production terminated at Mitsubishi Motors Australia Limited, MMC's manufacturing and marketing subsidiary in Australia.
2010			Apr. The construction of a new plant in Russia was completed under the agreement between MMC and France's PSA Peugeot Citroen.
2011			Jun. Establishment of "NMKV" joint venture company with Nissan Motor Co.,Ltd. to develop new minicars.
2012			Dec. MMC transferred all its shares in Netherlands Car B.V. to VDL Groep B.V. in the Netherlands.
2013			Dec. Establishment of an African representative office in Nairobi, Kenya.

MMC Mitsubishi Motors Corporation
MMSC Mitsubishi Motors Sales Co., Ltd.
C Chairman
P President

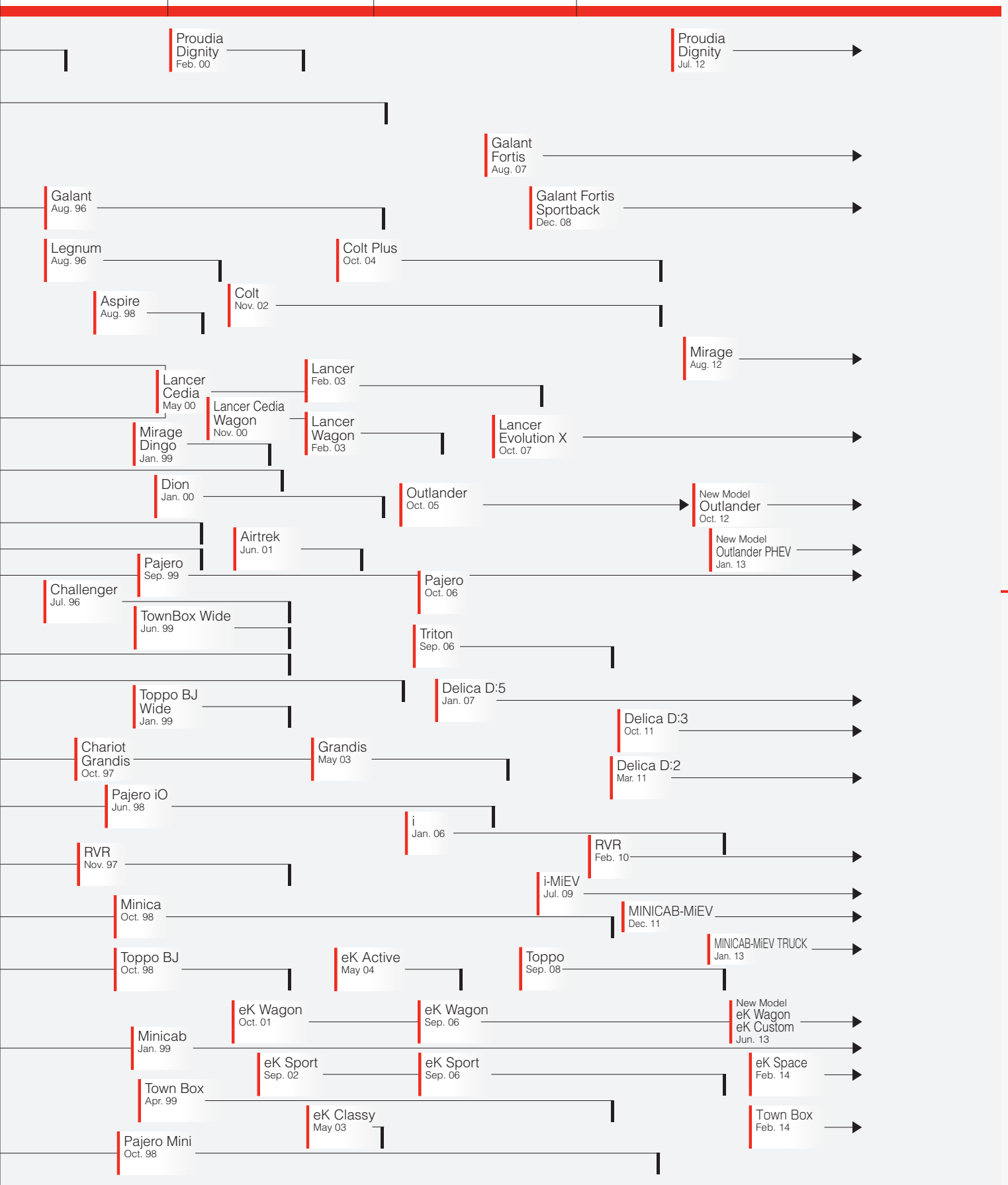
Passenger Cars



'00

'05

'10

As of September 1, 2014
Note: Dates Refer to Launch Date

Major Production and Sales Models

Models produced in Japan

■ Plug-in Hybrid Electric Vehicle

Outlander PHEV



Seating Capacity : 5 persons / 2.0 Liter Engine / 12kWh

■ Electric Vehicles (MiEV)

i-MiEV



Seating Capacity : 4 persons / 10.5kWh, 16.0kWh

MINICAB-MiEV



Seating Capacity : 2, 4 persons / 10.5kWh, 16.0kWh

MINICAB-MiEV TRUCK



Seating Capacity : 2 persons / 10.5kWh

■ Standard Cars

Pajero



Seating Capacity : 5, 7 persons / 3.0, 3.2 Liter Engine

Outlander



Seating Capacity : 7 persons / 2.0, 2.4 Liter Engine

RVR



Seating Capacity : 5 persons / 1.8 Liter Engine

Delica D:5



Seating Capacity : 7, 8 persons / 2.0, 2.3, 2.4 Liter Engine

Delica D:3



Seating Capacity : 5, 7 persons / 1.6 Liter Engine

Galant Fortis



Seating Capacity : 5 persons / 1.8, 2.0 Liter Engine

Galant Fortis Sportback



Seating Capacity : 5 persons / 1.8, 2.0 Liter Engine

Lancer Evolution X



Seating Capacity : 5 persons / 2.0 Liter Engine

Dignity



Seating Capacity : 5 persons / 3.5 Liter Engine

Proudia



Seating Capacity : 5 persons / 2.5, 3.7 Liter Engine

Mirage



Seating Capacity : 5 persons / 1.0 Liter Engine

Delica D:2



Seating Capacity : 5 persons / 1.3 Liter Engine

■ Mini Cars

eK Wagon / eK Custom



Seating Capacity : 4 persons / 0.66 Liter Engine



Seating Capacity : 4 persons / 0.66 Liter Engine

eK Space / eK Space Custom



Seating Capacity : 4 persons / 0.66 Liter Engine



Seating Capacity : 4 persons / 0.66 Liter Engine

Models produced overseas

■ U.S.A (MMNA)

Outlander Sport



Seating Capacity : 5 persons / 2.0 Liter Engine

■ Russian (PCMA Rus)

Outlander



Seating Capacity : 5 persons / 2.0, 2.4, 3.0 Liter Engine

Pajero Sport



Seating Capacity : 5, 7 persons / 2.5, 3.0, 3.2, 3.5 Liter Engine

■ Thailand (MMTh)

Mirage



Seating Capacity : 5 persons / 1.2 Liter Engine

Attrage



Seating Capacity : 5 persons / 1.2 Liter Engine

Triton / L200



Seating Capacity : 2, 5 persons / 2.4, 2.5 Liter Engine

Pajero Sport



Seating Capacity : 7 persons / 2.5 Liter Engine

Lancer EX



Seating Capacity : 5 persons / 1.8, 2.0 Liter Engine

■ Philippines (MMPC)

L300



Seating Capacity : 3 persons / 2.5 Liter Engine

■ China (GMMC)

ASX



Seating Capacity : 5 persons / 1.6, 2.0 Liter Engine

Pajero



Seating Capacity : 5, 7 persons / 3.0 Liter Engine

Pajero Sport



Seating Capacity : 7 persons / 2.4, 3.0 Liter Engine

■ China (SEM)

Lancer EX



Seating Capacity : 5 persons / 1.8, 2.0 Liter Engine

Derivation of MMC Major Models Name

Name	Derivation and Meaning
Delica D:5	From "delivery car"; D:5 meaning "5th-generation Delica"
eK Wagon	Coined from the Japanese "ii-kei", for excellent K-car (minicar)
Galant Fortis	Galant, French for "gallant" combined with Fortis, Latin for "brave"
i-MiEV	Mitsubishi Motors' electric vehicle. "From the Japanese "ai" meaning love, and representing intelligence, innovation, and imagination
Lancer Evolution	The name "MiEV" stands for "Mitsubishi Innovative Electric Vehicle."
minicab	Evolving the idea of progression to a higher state of being
Mirage	Light cab-over vehicle with a cargo bed
Outlander	From the English word (originally French) "mirage"
Pajero	From the English "outland", evoking the feeling of journeying to distant, unexplored lands in search of adventure
Triton	Named after a mountain cat that inhabits the Patagonia plateau region in southern Argentina
	Tri, English meaning "3" (from Mitsubishi = three diamonds), combined with "ton" of "1-ton pickup"

Drive@earth



MITSUBISHI MOTORS

Copyright ©2014
All rights reserved by Mitsubishi Motors Corporation

MITSUBISHI MOTORS CORPORATION

33-8, Shiba 5-chome, Minato-ku, Tokyo 108-8410 Japan

TEL.03-6852-4274 FAX.03-6852-5405

TEL.+81-3-6852-4274 (Corporate PR) Fax: +81-3-6852-5405

Corporate Web Site : <http://www.mitsubishi-motors.com/>