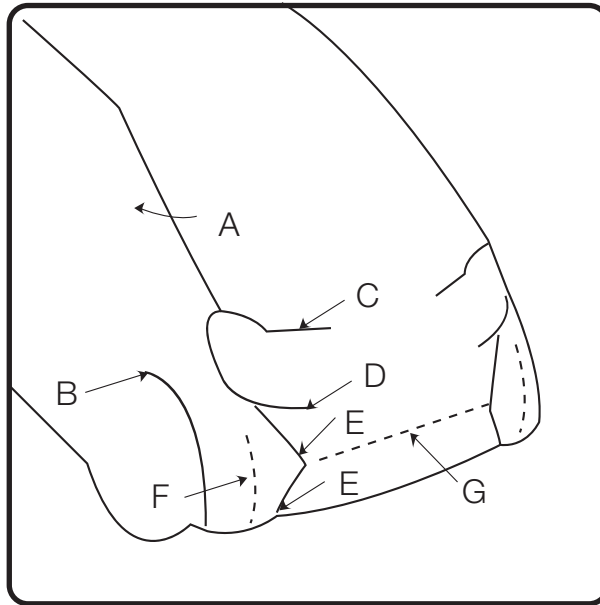


## How to make i yumi matsutoya original design model (08)

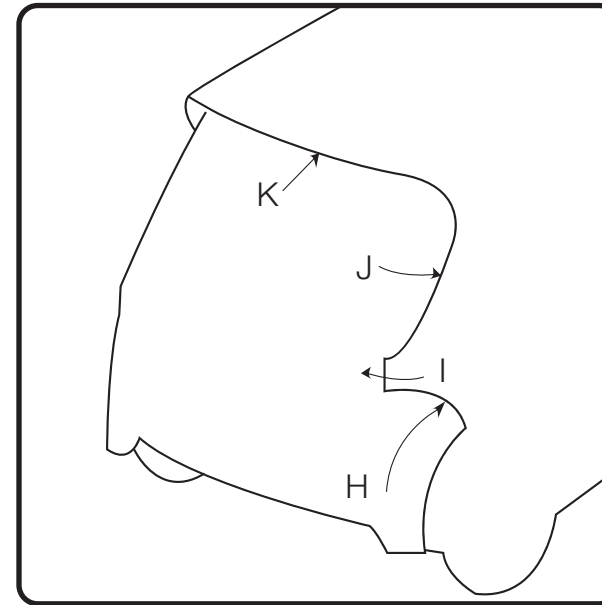
Use a sharp pair of scissors to cut the parts along the outline.

The \* marks within the thick border are glue flaps.

Do not fold all glue flaps. Read the instructions carefully as you build.



- A. Cut to the roof line, make the glue flap round without folding it, and glue on.
- B. Cut through the thick line and glue onto the flap so the lines overlap.
- C. Create a cut and roundly glue on the light.
- D. Create a cut and align the lines.
- E. Valley fold the flap and glue on.
- F. Mountain fold so that the fender sticks out.
- G. Lightly bend the area below the nose inward.



- H. Adjust the glue flap so that it overlaps with this line to roundly connect to the side.
- I. Arch the rear panel and glue on so this line is connected.
- J. Glue on so the light roundly connects.
- K. Mountain fold the flap and attach it into (underneath) the rear spoiler.