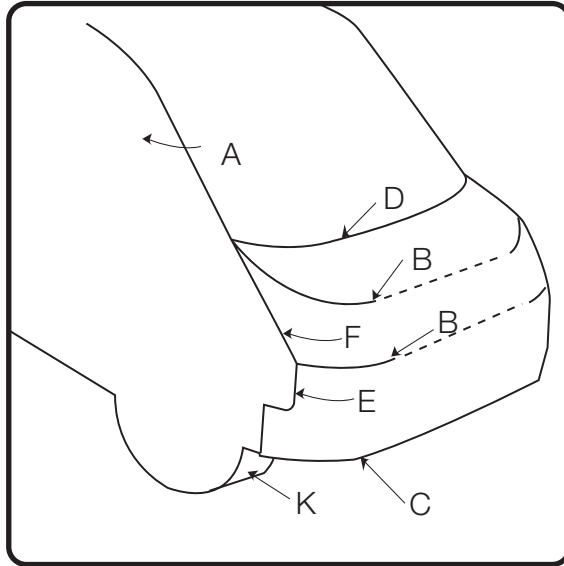


## How to make DELICA D:5 ROADEST (07)

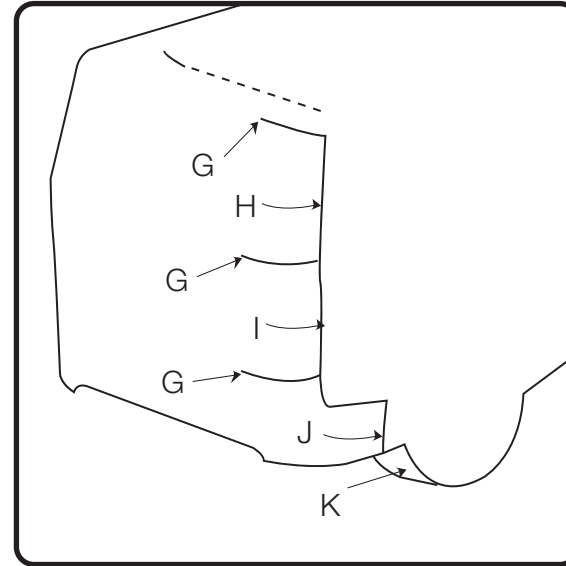
Use a sharp pair of scissors to cut the parts along the outline.

The \* marks within the thick border are glue flaps.

Do not fold all glue flaps. Read the instructions carefully as you build.



- A. Cut to the roof line, make the glue flap round without folding it, and glue on.
- B. Create a cut, and mountain fold the glue flap as you attach it.
- C. Mountain fold below the nose inward.
- D. Valley fold the flap and glue on.
- E. Attach the bumper roundly so this line is aligned.
- F. Make the light round and glue on so this line is aligned.



- G. Cut to here.
- H. Adjust the glue flap so that it overlaps with this line to roundly connect to the side.
- I. Adjust the glue flap so that it overlaps with this line to roundly connect to the side.
- J. Glue on so this line is aligned, and bend the bottom part inward.
- K. Make the tire tread round, mountain fold the glue flap and attach it to the inner part of the tire.