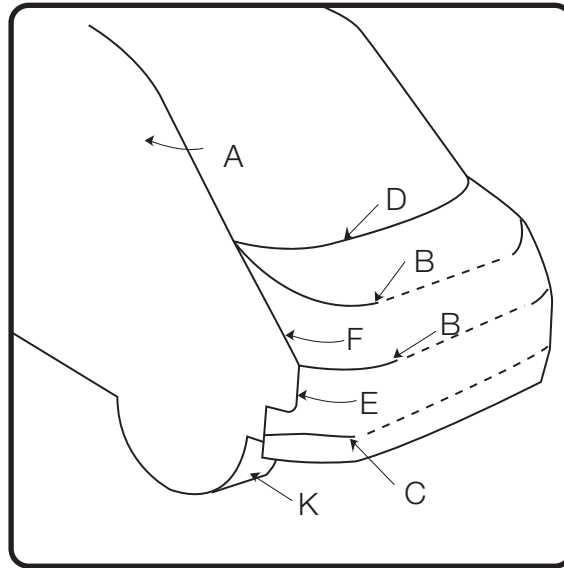


How to make DELICA D:5 (07)

Use a sharp pair of scissors to cut the parts along the outline.

The * marks within the thick border are glue flaps.

Do not fold all glue flaps. Read the instructions carefully as you build.



A. Cut to the roof line, make the glue flap round without folding it, and glue on.

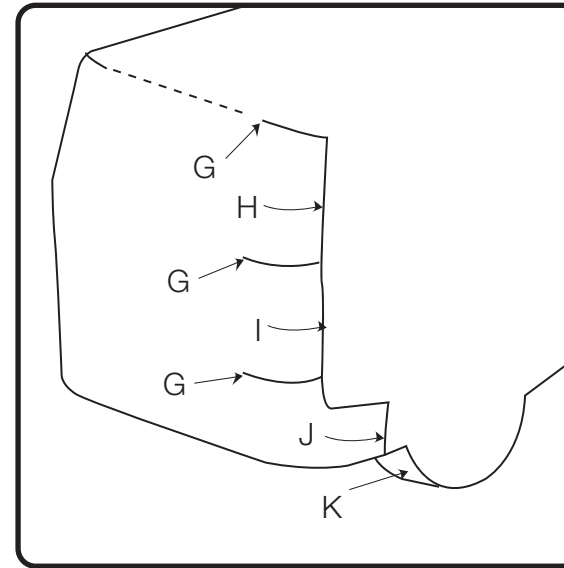
B. Create a cut, and mountain fold the glue flap as you attach it.

C. Cut in and attach, as you bend the area below the nose inward.

D. Valley fold the flap and glue on.

E. Attach the bumper roundly so this line is aligned.

F. Make the light round and glue on so this line is aligned.



G. Cut to here.

H. Adjust the glue flap so that it overlaps with this line to roundly connect to the side.

I. Adjust the glue flap so that it overlaps with this line to roundly connect to the side.

J. Glue on so this line is aligned, and bend the bottom part inward.

K. Make the tire tread round, mountain fold the glue flap and attach it to the inner part of the tire.